



January 27, 2026

**IGI Report Number LG763635289**  
**HALF MOON MODIFIED BRILLIANT**  
**LABORATORY GROWN DIAMOND**  
**6.86 X 4.17 X 2.75 MM**

Carat Weight **0.51 CARAT**  
Color Grade **E**  
Clarity Grade **VVS 1**  
Polish **VERY GOOD**  
Symmetry **VERY GOOD**  
Fluorescence **NONE**  
Inscription(s) **IGI LG763635289**

Comments: This Laboratory Grown Diamond was created by Chemical Vapor Deposition (CVD) growth process. Type IIa

**LABORATORY GROWN DIAMOND REPORT**

January 27, 2026  
IGI Report Number **LG763635289**  
Description **LABORATORY GROWN DIAMOND**  
Shape and Cutting Style **HALF MOON MODIFIED BRILLIANT**  
Measurements **6.86 X 4.17 X 2.75 MM**

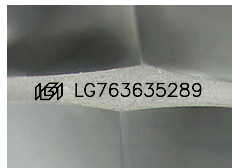
**GRADING RESULTS**

Carat Weight **0.51 CARAT**  
Color Grade **E**  
Clarity Grade **VVS 1**

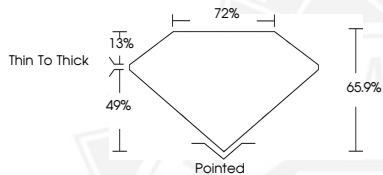
**ADDITIONAL GRADING INFORMATION**

Polish **VERY GOOD**  
Symmetry **VERY GOOD**  
Fluorescence **NONE**  
Inscription(s) **IGI LG763635289**

Comments: This Laboratory Grown Diamond was created by Chemical Vapor Deposition (CVD) growth process.  
Type IIa



Sample Image Used



January 27, 2026

**IGI Report Number LG763635289**  
**HALF MOON MODIFIED BRILLIANT**  
**LABORATORY GROWN DIAMOND**  
**6.86 X 4.17 X 2.75 MM**

Carat Weight **0.51 CARAT**  
Color Grade **E**  
Clarity Grade **VVS 1**  
Polish **VERY GOOD**  
Symmetry **VERY GOOD**  
Fluorescence **NONE**  
Inscription(s) **IGI LG763635289**

Comments: This Laboratory Grown Diamond was created by Chemical Vapor Deposition (CVD) growth process. Type IIa



THIS DOCUMENT WAS PRODUCED WITH THE FOLLOWING SECURITY MEASURES: SPECIAL DOCUMENT PAPER, INK SCREENS, WATERMARK, BACKGROUND DESIGNS, HOLOGRAM AND OTHER SECURITY FEATURES NOT LISTED AND DO EXCEED DOCUMENT SECURITY INDUSTRY GUIDELINES.