



LABORATORY GROWN DIAMOND REPORT

January 29, 2026
 IGI Report Number **LG763635262**
 Description **LABORATORY GROWN DIAMOND**
 Shape and Cutting Style **PRINCESS CUT**
 Measurements **4.96 X 4.81 X 3.33 MM**

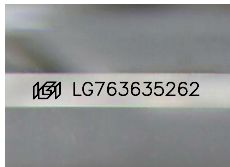
GRADING RESULTS

Carat Weight **0.73 CARAT**
 Color Grade **E**
 Clarity Grade **VVS 1**

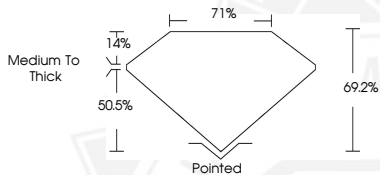
ADDITIONAL GRADING INFORMATION

Polish **VERY GOOD**
 Symmetry **VERY GOOD**
 Fluorescence **NONE**
 Inscription(s) **IGI LG763635262**

Comments: This Laboratory Grown Diamond was created by Chemical Vapor Deposition (CVD) growth process. Type IIa



Sample Image Used



January 29, 2026
 IGI Report Number **LG763635262**
PRINCESS CUT
LABORATORY GROWN DIAMOND
4.96 X 4.81 X 3.33 MM
 Carat Weight **0.73 CARAT**
 Color Grade **E**
 Clarity Grade **VVS 1**
 Polish **VERY GOOD**
 Symmetry **VERY GOOD**
 Fluorescence **NONE**
 Inscription(s) **IGI LG763635262**

Comments: This Laboratory Grown Diamond was created by Chemical Vapor Deposition (CVD) growth process. Type IIa



January 29, 2026
 IGI Report Number **LG763635262**
PRINCESS CUT
LABORATORY GROWN DIAMOND
4.96 X 4.81 X 3.33 MM
 Carat Weight **0.73 CARAT**
 Color Grade **E**
 Clarity Grade **VVS 1**
 Polish **VERY GOOD**
 Symmetry **VERY GOOD**
 Fluorescence **NONE**
 Inscription(s) **IGI LG763635262**

Comments: This Laboratory Grown Diamond was created by Chemical Vapor Deposition (CVD) growth process. Type IIa



THIS DOCUMENT WAS PRODUCED WITH THE FOLLOWING SECURITY MEASURES: SPECIAL DOCUMENT PAPER, INK SCREENS, WATERMARK, BACKGROUND DESIGNS, HOLOGRAM AND OTHER SECURITY FEATURES NOT LISTED AND DO EXCEED DOCUMENT SECURITY INDUSTRY GUIDELINES.