



January 27, 2026

IGI Report Number **LG763635219**

**PRINCESS CUT
LABORATORY GROWN DIAMOND
4.94 X 4.82 X 3.43 MM**

| | |
|----------------|------------------------|
| Carat Weight | 0.74 CARAT |
| Color Grade | D |
| Clarity Grade | VVS 1 |
| Polish | VERY GOOD |
| Symmetry | VERY GOOD |
| Fluorescence | NONE |
| Inscription(s) | IGI LG763635219 |

Comments: This Laboratory Grown Diamond was created by Chemical Vapor Deposition (CVD) growth process. Type IIa

LABORATORY GROWN DIAMOND REPORT

January 27, 2026
IGI Report Number **LG763635219**
Description **LABORATORY GROWN DIAMOND**
Shape and Cutting Style **PRINCESS CUT**
Measurements **4.94 X 4.82 X 3.43 MM**

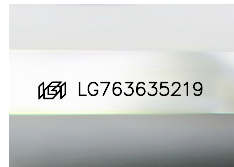
GRADING RESULTS

Carat Weight **0.74 CARAT**
Color Grade **D**
Clarity Grade **VVS 1**

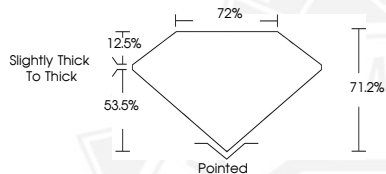
ADDITIONAL GRADING INFORMATION

Polish **VERY GOOD**
Symmetry **VERY GOOD**
Fluorescence **NONE**
Inscription(s) **IGI LG763635219**

Comments: This Laboratory Grown Diamond was created by Chemical Vapor Deposition (CVD) growth process.
Type IIa



Sample Image Used



January 27, 2026

IGI Report Number **LG763635219**

**PRINCESS CUT
LABORATORY GROWN DIAMOND
4.94 X 4.82 X 3.43 MM**

| | |
|----------------|------------------------|
| Carat Weight | 0.74 CARAT |
| Color Grade | D |
| Clarity Grade | VVS 1 |
| Polish | VERY GOOD |
| Symmetry | VERY GOOD |
| Fluorescence | NONE |
| Inscription(s) | IGI LG763635219 |

Comments: This Laboratory Grown Diamond was created by Chemical Vapor Deposition (CVD) growth process. Type IIa



THIS DOCUMENT WAS PRODUCED WITH THE FOLLOWING SECURITY MEASURES: SPECIAL DOCUMENT PAPER, INK SCREENS, WATERMARK, BACKGROUND DESIGNS, HOLOGRAM AND OTHER SECURITY FEATURES NOT LISTED AND DO EXCEED DOCUMENT SECURITY INDUSTRY GUIDELINES.