



# INTERNATIONAL GEMOLOGICAL INSTITUTE

## LABORATORY GROWN DIAMOND REPORT

January 15, 2026  
 IGI Report Number **LG763634464**  
 Description **LABORATORY GROWN DIAMOND**  
 Shape and Cutting Style **ROUND BRILLIANT**  
 Measurements **5.83 - 5.85 X 3.56 MM**

### GRADING RESULTS

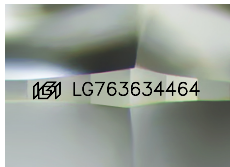
Carat Weight **0.74 CARAT**  
 Color Grade **E**  
 Clarity Grade **VS 1**  
 Cut Grade **IDEAL**

### ADDITIONAL GRADING INFORMATION

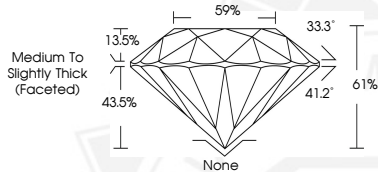
Polish **EXCELLENT**  
 Symmetry **EXCELLENT**  
 Fluorescence **NONE**  
 Inscription(s) **IGI LG763634464**

Comments: This Laboratory Grown Diamond was created by  
 Chemical Vapor Deposition (CVD) growth process.  
 Type IIa

ELECTRONIC COPY



Sample Image Used



January 15, 2026  
 IGI Report Number **LG763634464**  
**ROUND BRILLIANT**  
**LABORATORY GROWN DIAMOND**  
**5.83 - 5.85 X 3.56 MM**  
 Carat Weight **0.74 CARAT**  
 Color Grade **E**  
 Clarity Grade **VS 1**  
 Cut Grade **IDEAL**  
 Polish **EXCELLENT**  
 Symmetry **EXCELLENT**  
 Fluorescence **NONE**  
 Inscription(s) **IGI LG763634464**  
 Comments: This Laboratory Grown  
 Diamond was created by  
 Chemical Vapor Deposition (CVD)  
 growth process. Type IIa



January 15, 2026  
 IGI Report Number **LG763634464**  
**ROUND BRILLIANT**  
**LABORATORY GROWN DIAMOND**  
**5.83 - 5.85 X 3.56 MM**  
 Carat Weight **0.74 CARAT**  
 Color Grade **E**  
 Clarity Grade **VS 1**  
 Cut Grade **IDEAL**  
 Polish **EXCELLENT**  
 Symmetry **EXCELLENT**  
 Fluorescence **NONE**  
 Inscription(s) **IGI LG763634464**  
 Comments: This Laboratory Grown  
 Diamond was created by  
 Chemical Vapor Deposition (CVD)  
 growth process. Type IIa



THIS DOCUMENT WAS PRODUCED WITH THE FOLLOWING SECURITY MEASURES: SPECIAL DOCUMENT PAPER, INK SCREENS, WATERMARK, BACKGROUND DESIGNS, HOLOGRAM AND OTHER SECURITY FEATURES NOT LISTED AND DO EXCEED DOCUMENT SECURITY INDUSTRY GUIDELINES.

For terms & conditions and to verify this report, please visit [www.igi.org](http://www.igi.org)