



ELECTRONIC COPY

LABORATORY GROWN DIAMOND REPORT

January 6, 2026
IGI Report Number LG763634036
Description LABORATORY GROWN DIAMOND
Shape and Cutting Style CUT CORNERED RECTANGULAR MODIFIED BRILLIANT
Measurements 10.27 X 7.13 X 4.86 MM

GRADING RESULTS

Carat Weight 3.04 CARATS
Color Grade D
Clarity Grade VS 1

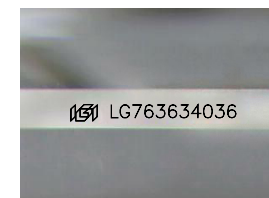
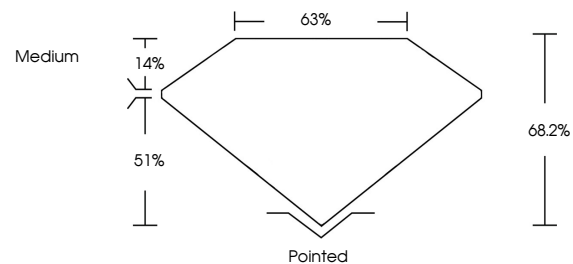
ADDITIONAL GRADING INFORMATION

Polish EXCELLENT
Symmetry EXCELLENT
Fluorescence NONE

Inscription(s) IGI LG763634036

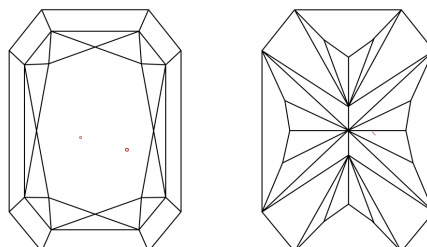
Comments: This Laboratory Grown Diamond was created by Chemical Vapor Deposition (CVD) growth process. Type IIa

PROPORTIONS



Sample Image Used

CLARITY CHARACTERISTICS



KEY TO SYMBOLS

Red symbols indicate internal characteristics. Green symbols indicate external characteristics.

COLOR

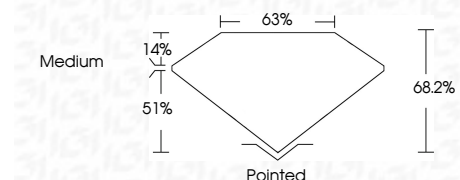
D E F G H I J Faint Very Light Light

CLARITY

FL IF VS 1-2 VS 2-3 SI 1-2 I 1-3
Flawless Internally Flawless Very Very Slightly Included Very Slightly Included Slightly Included Included



January 6, 2026
IGI Report Number LG763634036
Description LABORATORY GROWN DIAMOND
Shape and Cutting Style CUT CORNERED RECTANGULAR MODIFIED BRILLIANT
Measurements 10.27 X 7.13 X 4.86 MM
GRADING RESULTS
Carat Weight 3.04 CARATS
Color Grade D
Clarity Grade VS 1



ADDITIONAL GRADING INFORMATION

Polish EXCELLENT
Symmetry EXCELLENT
Fluorescence NONE
Inscription(s) IGI LG763634036
Comments: This Laboratory Grown Diamond was created by Chemical Vapor Deposition (CVD) growth process. Type IIa



January 6, 2026
IGI Report No LG763634036
CUT CORNERED RECT. MODIFIED BRILLIANT
3.04 CARATS
D
3.04 CARATS
D
VS 1
68.2%
63%
Medium
Pointed
EXCELLENT
EXCELLENT
NONE
IGI LG763634036

Comments: This Laboratory Grown Diamond was created by Chemical Vapor Deposition (CVD) growth process. Type IIa