



January 7, 2026

IGI Report Number **LG763633809**

**EMERALD CUT  
LABORATORY GROWN DIAMOND  
6.11 X 4.28 X 2.95 MM**

Carat Weight **0.75 CARAT**  
Color Grade **F**  
Clarity Grade **VS 2**  
Polish **EXCELLENT**  
Symmetry **EXCELLENT**  
Fluorescence **NONE**  
Inscription(s) **IGI LG763633809**

Comments: This Laboratory Grown Diamond was created by Chemical Vapor Deposition (CVD) growth process. Type IIa

**LABORATORY GROWN DIAMOND REPORT**

January 7, 2026  
IGI Report Number **LG763633809**  
Description **LABORATORY GROWN DIAMOND**  
Shape and Cutting Style **EMERALD CUT**  
Measurements **6.11 X 4.28 X 2.95 MM**

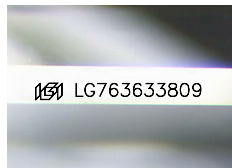
**GRADING RESULTS**

Carat Weight **0.75 CARAT**  
Color Grade **F**  
Clarity Grade **VS 2**

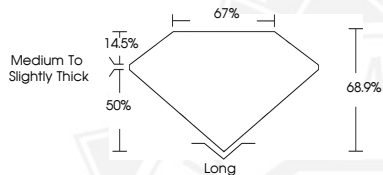
**ADDITIONAL GRADING INFORMATION**

Polish **EXCELLENT**  
Symmetry **EXCELLENT**  
Fluorescence **NONE**  
Inscription(s) **IGI LG763633809**

Comments: This Laboratory Grown Diamond was created by Chemical Vapor Deposition (CVD) growth process. Type IIa



Sample Image Used



January 7, 2026

IGI Report Number **LG763633809**

**EMERALD CUT  
LABORATORY GROWN DIAMOND  
6.11 X 4.28 X 2.95 MM**

Carat Weight **0.75 CARAT**  
Color Grade **F**  
Clarity Grade **VS 2**  
Polish **EXCELLENT**  
Symmetry **EXCELLENT**  
Fluorescence **NONE**  
Inscription(s) **IGI LG763633809**

Comments: This Laboratory Grown Diamond was created by Chemical Vapor Deposition (CVD) growth process. Type IIa



THIS DOCUMENT WAS PRODUCED WITH THE FOLLOWING SECURITY MEASURES: SPECIAL DOCUMENT PAPER, INK SCREENS, WATERMARK, BACKGROUND DESIGNS, HOLOGRAM AND OTHER SECURITY FEATURES NOT LISTED AND DO EXCEED DOCUMENT SECURITY INDUSTRY GUIDELINES.