



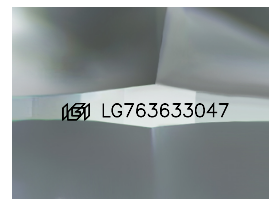
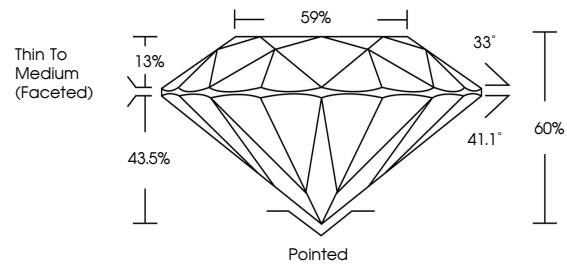
**INTERNATIONAL
GEMOLOGICAL
INSTITUTE**

ELECTRONIC COPY

LABORATORY GROWN DIAMOND REPORT

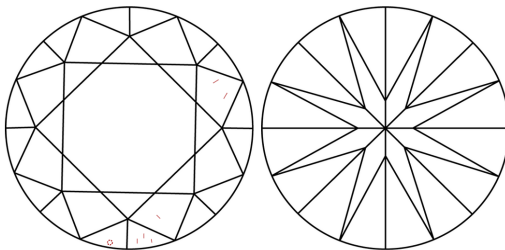
LG763633047
Report verification at igi.org

PROPORTIONS



Sample Image Used

CLARITY CHARACTERISTICS



KEY TO SYMBOLS

Red symbols indicate internal characteristics.
Green symbols indicate external characteristics.

COLOR

D E F G H I J Faint Very Light Light

CLARITY

FL	IF	VVS ¹⁻²	VS ¹⁻²	SI ¹⁻²	I ¹⁻³
Flawless	Internally Flawless	Very Very Slightly Included	Very Slightly Included	Slightly Included	Included

LABORATORY GROWN DIAMOND REPORT



January 5, 2026

IGI Report Number **LG763633047**

Description	LABORATORY GROWN DIAMOND
-------------	--------------------------

Shape and Cutting Style **ROUND BRILLIANT**

Measurements 6.48 - 6.53 X 3.91 MM

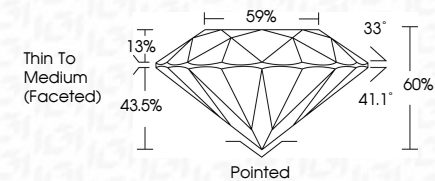
GRADING RESULTS

Carat Weight 1.00 CARAT

Color Grade D

Clarity Grade **VVS 2**

Cut Grade **IDEAL**



ADDITIONAL GRADING INFORMATION

Polish **EXCELLENT**Symmetry **EXCELLENT**Fluorescence **NONE**Inscription(s) LG763633047

Comments: As Grown - No indication of post-growth treatment.

This Laboratory Grown Diamond was created by High Pressure High Temperature (HPHT) growth process.

Type II



IG



© IGI 2020, International Gemological Institute

FD - 10 20

www.igi.org

THIS DOCUMENT WAS PRODUCED WITH THE FOLLOWING SECURITY MEASURES: SPECIAL DOCUMENT PAPER, INK SCREENS, WATERMARK, BACKGROUND DESIGNS, HOLOGRAM AND OTHER SECURITY FEATURES NOT LISTED AND DO EXCEED DOCUMENT SECURITY INDUSTRY GUIDELINES

January 5, 2026	Report No 1G763833047		1.00 CARAT		Comments:	
ROUND BRILLIANT	6.48 - 6.63 X 3.91 MM	Color Grade	VVS 2	60%	Polished	As Grown - No indication of post-growth treatment. Laboratory Grown Diamond was created by High Pressure High Temperature (HPHT) growth process. Type II
	Carat Weight	Clarity Grade	IDEAL	59%	EXCELLENT	
	Color Grade	Cut Grade		59%	EXCELLENT	
	Depth	Table		Thin To Medium (faceted)	NONE	
	Girdle				1691 LG763833047	
					Fluorescence	
					Symmetry	
					Engravings	