

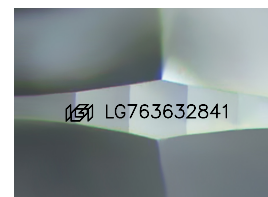
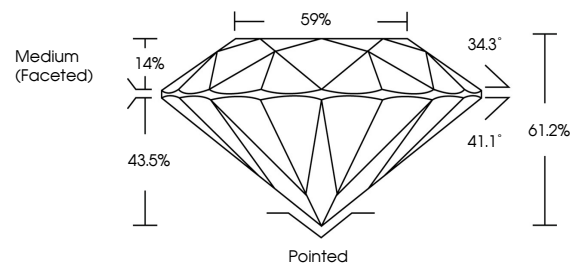


**ELECTRONIC COPY**

## LABORATORY GROWN DIAMOND REPORT

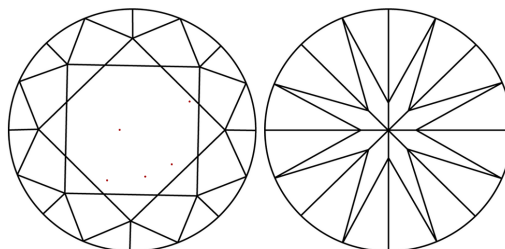
LG763632841  
Report verification at [igi.org](https://igi.org)

## PROPORTIONS



Sample Image Used

## CLARITY CHARACTERISTICS



### KEY TO SYMBOLS

Red symbols indicate internal characteristics.  
Green symbols indicate external characteristics.

## COLOR

D E F G H I J Faint Very Light Light

## CLARITY

| FL       | IF                  | VVS <sup>1-2</sup>          | VS <sup>1-2</sup>      | SI <sup>1-2</sup> | I <sup>1-3</sup> |
|----------|---------------------|-----------------------------|------------------------|-------------------|------------------|
| Flawless | Internally Flawless | Very Very Slightly Included | Very Slightly Included | Slightly Included | Included         |

## LABORATORY GROWN DIAMOND REPORT



January 3, 2026

IGI Report Number **LG763632841**Description **LABORATORY GROWN DIAMOND**Shape and Cutting Style **ROUND BRILLIANT**

Measurements 8.11 - 8.14 X 4.97 MM

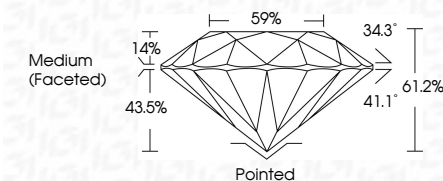
## GRADING RESULTS

Carat Weight **2.01 CARATS**

Color Grade

Clarity Grade **VS 2**

Cut Grade **IDEAL**



### ADDITIONAL GRADING INFORMATION

Polish EXCELLENT

Symmetry **EXCELLENT**Fluorescence **NONE**Inscription(s)  LG763632841

Comments: This Laboratory Grown Diamond was created by Chemical Vapor Deposition (CVD) growth process.  
Type IIa



© IGI 2020, International Gemological Institute

FD - 10 20

**www.igi.org**

THIS DOCUMENT WAS PRODUCED WITH THE FOLLOWING SECURITY MEASURES: SPECIAL DOCUMENT PAPER, INK SCREENS, WATERMARK, BACKGROUND DESIGNS, HOLOGRAM AND OTHER SECURITY FEATURES NOT LISTED AND DO EXCEED DOCUMENT SECURITY INDUSTRY GUIDELINE

January 3, 2026  
GI Report No LG763632841  
POIND BRILLIANT

|                            |               |                  |
|----------------------------|---------------|------------------|
| <b>811 - 8.14 X .67 MM</b> | Coral Weight  | 201 CARATS       |
|                            | Color Grade   | F                |
|                            | Clarity Grade | VVS2             |
|                            | Cut Grade     | IDP&L            |
|                            | Depth         | 61.2%            |
|                            | Table         | 59%              |
|                            | Grade         | Medium (Faceted) |
|                            | Culet         | Poined           |
|                            | Polish        | EXCELLENT        |
|                            | Symmetry      | EXCELLENT        |
|                            | Fluorescence  | NONE             |
|                            | Reference(s)  | gem/1274349241   |

**Comments:**  
This Laboratory Grown Diamond was  
created by Chemical Vapor Deposition  
(CVD) growth process.