



LABORATORY GROWN DIAMOND REPORT

January 5, 2026
 IGI Report Number **LG763630689**
 Description **LABORATORY GROWN DIAMOND**
 Shape and Cutting Style **EMERALD CUT**
 Measurements **5.97 X 4.01 X 2.70 MM**

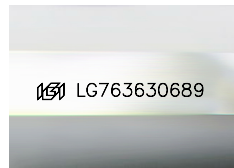
GRADING RESULTS

Carat Weight **0.68 CARAT**
 Color Grade **D**
 Clarity Grade **VS 2**

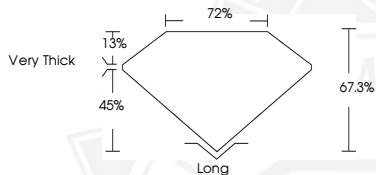
ADDITIONAL GRADING INFORMATION

Polish **VERY GOOD**
 Symmetry **VERY GOOD**
 Fluorescence **NONE**
 Inscription(s) **IGI LG763630689**

Comments: This Laboratory Grown Diamond was created by
 Chemical Vapor Deposition (CVD) growth process.
 Type IIa



Sample Image Used



January 5, 2026
 IGI Report Number **LG763630689**
EMERALD CUT
LABORATORY GROWN DIAMOND
5.97 X 4.01 X 2.70 MM
 Carat Weight **0.68 CARAT**
 Color Grade **D**
 Clarity Grade **VS 2**
 Polish **VERY GOOD**
 Symmetry **VERY GOOD**
 Fluorescence **NONE**
 Inscription(s) **IGI LG763630689**

Comments: This Laboratory Grown
 Diamond was created by
 Chemical Vapor Deposition (CVD)
 growth process. Type IIa



January 5, 2026
 IGI Report Number **LG763630689**
EMERALD CUT
LABORATORY GROWN DIAMOND
5.97 X 4.01 X 2.70 MM
 Carat Weight **0.68 CARAT**
 Color Grade **D**
 Clarity Grade **VS 2**
 Polish **VERY GOOD**
 Symmetry **VERY GOOD**
 Fluorescence **NONE**
 Inscription(s) **IGI LG763630689**

Comments: This Laboratory Grown
 Diamond was created by
 Chemical Vapor Deposition (CVD)
 growth process. Type IIa



THIS DOCUMENT WAS PRODUCED WITH THE FOLLOWING SECURITY MEASURES: SPECIAL DOCUMENT PAPER, INK SCREENS, WATERMARK, BACKGROUND DESIGNS, HOLOGRAM AND OTHER SECURITY FEATURES NOT LISTED AND DO EXCEED DOCUMENT SECURITY INDUSTRY GUIDELINES.