



**ELECTRONIC COPY**

LG763628883  
Report verification at igi.org



January 7, 2026  
IGI Report Number **LG763628883**  
Description **LABORATORY GROWN DIAMOND**  
Shape and Cutting Style **MODIFIED OCTAGONAL STEP CUT**  
Measurements **14.26 X 6.77 X 3.82 MM**  
**GRADING RESULTS**  
Carat Weight **2.56 CARATS**  
Color Grade **E**  
Clarity Grade **VS 1**

**LABORATORY GROWN DIAMOND REPORT**

January 7, 2026  
IGI Report Number **LG763628883**  
Description **LABORATORY GROWN DIAMOND**  
Shape and Cutting Style **MODIFIED OCTAGONAL STEP CUT**  
Measurements **14.26 X 6.77 X 3.82 MM**

**GRADING RESULTS**

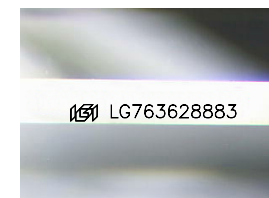
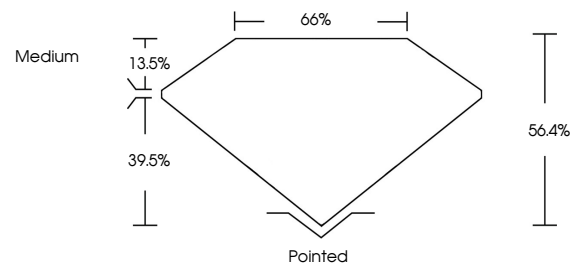
Carat Weight **2.56 CARATS**  
Color Grade **E**  
Clarity Grade **VS 1**

**ADDITIONAL GRADING INFORMATION**

Polish **EXCELLENT**  
Symmetry **EXCELLENT**  
Fluorescence **NONE**  
Inscription(s) **IGI LG763628883**

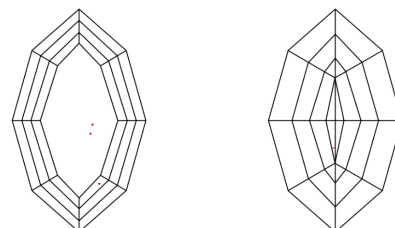
Comments: This Laboratory Grown Diamond was created by Chemical Vapor Deposition (CVD) growth process.  
Type IIa

**PROPORTIONS**



Sample Image Used

**CLARITY CHARACTERISTICS**



**KEY TO SYMBOLS**

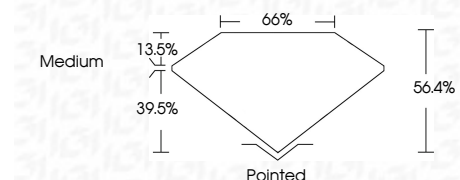
Red symbols indicate internal characteristics.  
Green symbols indicate external characteristics.

**COLOR**

D E F G H I J Faint Very Light Light

**CLARITY**

FL	IF	VS <sup>1-2</sup>	VS <sup>1-2</sup>	SI <sup>1-2</sup>	I <sup>1-3</sup>
Flawless	Internally Flawless	Very Very Slightly Included	Very Slightly Included	Slightly Included	Included



**ADDITIONAL GRADING INFORMATION**

Polish **EXCELLENT**  
Symmetry **EXCELLENT**  
Fluorescence **NONE**  
Inscription(s) **IGI LG763628883**  
Comments: This Laboratory Grown Diamond was created by Chemical Vapor Deposition (CVD) growth process.  
Type IIa



**IGI**



January 7, 2026  
IGI Report No **LG763628883**  
**MODIFIED OCTAGONAL STEP CUT**  
**14.26 X 6.77 X 3.82 MM**  
Carat Weight **2.56 CARATS**  
Color Grade **E**  
Clarity Grade **VS 1**  
Table **66%**  
Depth **39.5%**  
Girdle **Medium**  
Culet **Pointed**  
Polish **EXCELLENT**  
Symmetry **EXCELLENT**  
Fluorescence **NONE**  
Inscription(s) **IGI LG763628883**

Comments: This Laboratory Grown Diamond was created by Chemical Vapor Deposition (CVD) growth process.  
Type IIa