

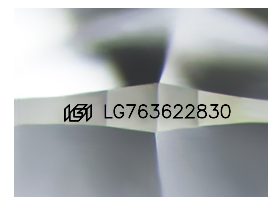
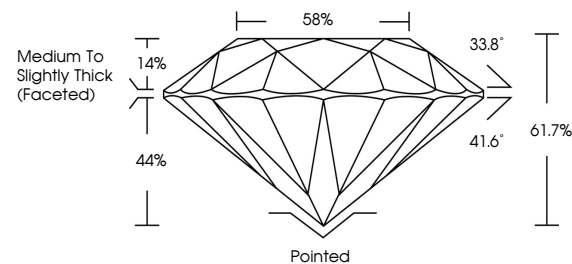


ELECTRONIC COPY

LABORATORY GROWN DIAMOND REPORT

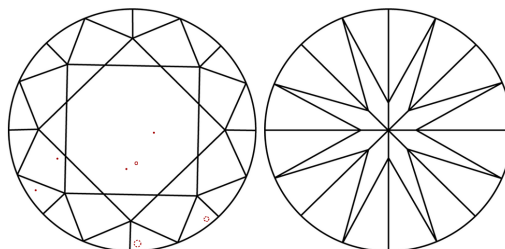
LG763622830
Report verification at igi.org

PROPORTIONS



Sample Image Used

CLARITY CHARACTERISTICS



KEY TO SYMBOLS

Red symbols indicate internal characteristics.
Green symbols indicate external characteristics.

COLOR

D E F G H I J Faint Very Light Light

CLARITY

FL	IF	VVS ¹⁻²	VS ¹⁻²	SI ¹⁻²	I ¹⁻³
Flawless	Internally Flawless	Very Very Slightly Included	Very Slightly Included	Slightly Included	Included

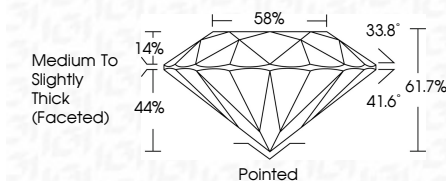
LABORATORY GROWN DIAMOND REPORT



January 5, 2026	
IGI Report Number	LG763622830
Description	LABORATORY GROWN DIAMOND
Shape and Cutting Style	ROUND BRILLIANT
Measurements	8.09 - 8.15 X 5.01 MM

GRADING RESULTS

Carat Weight	2.01 CARATS
Color Grade	E
Clarity Grade	VS 1
Cut Grade	IDEAL



ADDITIONAL GRADING INFORMATION

Polish	EXCELLENT
Symmetry	EXCELLENT
Fluorescence	NONE
Inscription(s)	 LG763622830

Comments: This Laboratory Grown Diamond was created by Chemical Vapor Deposition (CVD) growth process.
Type IIa



© IGI 2020, International Gemological Institute

FD - 10 20



THIS DOCUMENT WAS PRODUCED WITH THE FOLLOWING SECURITY MEASURES: SPECIAL DOCUMENT PAPER, INK SCREENS, WATERMARK, BACKGROUND DESIGNS, HOLOGRAM, AND OTHER SECURITY FEATURES NOT LISTED AND DO EXCEED DOCUMENT SECURITY INDUSTRY GUIDELINES

www.igi.org

January 5, 2026	2.01 CARATS	E	VS 1	Pointed	Comments: This Crown Diamond was created by Chemical Vapor Deposition (CVD) growth process. Type IIa
GI Report No. LG76322830			IDEAL	EXCELLENT	
ROUND BRILLIANT			61.7%	EXCELLENT	
0.09 - 0.15 X 6.01 MM	Color Grade		89%	NONE	
Clarity Grade	Carat Weight		Medium to Slightly Thick (Faceted)	1691 LG76322830	
			Cut Grade	Depth	Inscriptions(s)
			Table	Symmetry	
			Grades	Fluorescence	
				Cluef	
				Polish	