



LABORATORY GROWN DIAMOND REPORT

January 7, 2026
 IGI Report Number **LG763622392**
 Description **LABORATORY GROWN DIAMOND**
 Shape and Cutting Style **PEAR BRILLIANT**
 Measurements **8.50 X 5.66 X 3.51 MM**

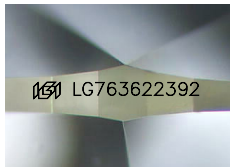
GRADING RESULTS

Carat Weight **0.99 CARAT**
 Color Grade **F**
 Clarity Grade **VS 2**

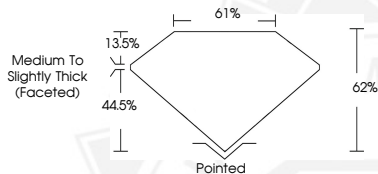
ADDITIONAL GRADING INFORMATION

Polish **EXCELLENT**
 Symmetry **EXCELLENT**
 Fluorescence **NONE**
 Inscription(s) **IGI LG763622392**

Comments: This Laboratory Grown Diamond was created by Chemical Vapor Deposition (CVD) growth process. Type IIa



Sample Image Used



January 7, 2026
 IGI Report Number **LG763622392**
PEAR BRILLIANT
LABORATORY GROWN DIAMOND
8.50 X 5.66 X 3.51 MM
 Carat Weight **0.99 CARAT**
 Color Grade **F**
 Clarity Grade **VS 2**
 Polish **EXCELLENT**
 Symmetry **EXCELLENT**
 Fluorescence **NONE**
 Inscription(s) **IGI LG763622392**

Comments: This Laboratory Grown Diamond was created by Chemical Vapor Deposition (CVD) growth process. Type IIa



January 7, 2026
 IGI Report Number **LG763622392**
PEAR BRILLIANT
LABORATORY GROWN DIAMOND
8.50 X 5.66 X 3.51 MM
 Carat Weight **0.99 CARAT**
 Color Grade **F**
 Clarity Grade **VS 2**
 Polish **EXCELLENT**
 Symmetry **EXCELLENT**
 Fluorescence **NONE**
 Inscription(s) **IGI LG763622392**

Comments: This Laboratory Grown Diamond was created by Chemical Vapor Deposition (CVD) growth process. Type IIa



THIS DOCUMENT WAS PRODUCED WITH THE FOLLOWING SECURITY MEASURES: SPECIAL DOCUMENT PAPER, INK SCREENS, WATERMARK, BACKGROUND DESIGNS, HOLOGRAM AND OTHER SECURITY FEATURES NOT LISTED AND DO EXCEED DOCUMENT SECURITY INDUSTRY GUIDELINES.