



INTERNATIONAL GEMOLOGICAL INSTITUTE

LABORATORY GROWN DIAMOND REPORT

January 7, 2026
IGI Report Number **LG763622382**
Description **LABORATORY GROWN DIAMOND**
Shape and Cutting Style **OVAL BRILLIANT**
Measurements **7.92 X 5.55 X 3.50 MM**

GRADING RESULTS

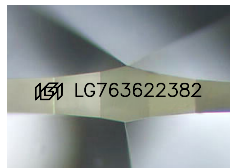
Carat Weight **0.99 CARAT**
Color Grade **E**
Clarity Grade **VS 1**

ADDITIONAL GRADING INFORMATION

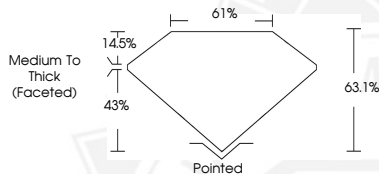
Polish **EXCELLENT**
Symmetry **EXCELLENT**
Fluorescence **NONE**
Inscription(s) **IGI LG763622382**

Comments: This Laboratory Grown Diamond was created by Chemical Vapor Deposition (CVD) growth process. Type IIa

ELECTRONIC COPY



Sample Image Used



January 7, 2026

IGI Report Number **LG763622382**

OVAL BRILLIANT

LABORATORY GROWN DIAMOND

7.92 X 5.55 X 3.50 MM

Carat Weight **0.99 CARAT**

Color Grade **E**

Clarity Grade **VS 1**

Polish **EXCELLENT**

Symmetry **EXCELLENT**

Fluorescence **NONE**

Inscription(s) **IGI LG763622382**

Comments: This Laboratory Grown Diamond was created by Chemical Vapor Deposition (CVD) growth process. Type IIa



January 7, 2026

IGI Report Number **LG763622382**

OVAL BRILLIANT

LABORATORY GROWN DIAMOND

7.92 X 5.55 X 3.50 MM

Carat Weight **0.99 CARAT**

Color Grade **E**

Clarity Grade **VS 1**

Polish **EXCELLENT**

Symmetry **EXCELLENT**

Fluorescence **NONE**

Inscription(s) **IGI LG763622382**

Comments: This Laboratory Grown Diamond was created by Chemical Vapor Deposition (CVD) growth process. Type IIa



THIS DOCUMENT WAS PRODUCED WITH THE FOLLOWING SECURITY MEASURES: SPECIAL DOCUMENT PAPER, INK SCREENS, WATERMARK, BACKGROUND DESIGNS, HOLOGRAM AND OTHER SECURITY FEATURES NOT LISTED AND DO EXCEED DOCUMENT SECURITY INDUSTRY GUIDELINES.

For terms & conditions and to verify this report, please visit www.igi.org