



**ELECTRONIC COPY**

## LABORATORY GROWN DIAMOND REPORT

|                         |                          |
|-------------------------|--------------------------|
| January 4, 2026         |                          |
| IGI Report Number       | LG763620919              |
| Description             | LABORATORY GROWN DIAMOND |
| Shape and Cutting Style | ROUND BRILLIANT          |
| Measurements            | 8.20 - 8.23 X 5.05 MM    |

## GRADING RESULTS

|               |             |
|---------------|-------------|
| Carat Weight  | 2.09 CARATS |
| Color Grade   | D           |
| Clarity Grade | VS 1        |
| Cut Grade     | IDEAL       |

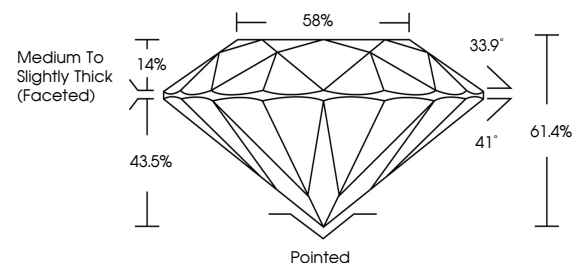
### ADDITIONAL GRADING INFORMATION

|                |                |
|----------------|----------------|
| Polish         | EXCELLENT      |
| Symmetry       | EXCELLENT      |
| Fluorescence   | NONE           |
| Inscription(s) | 15 LG763620919 |

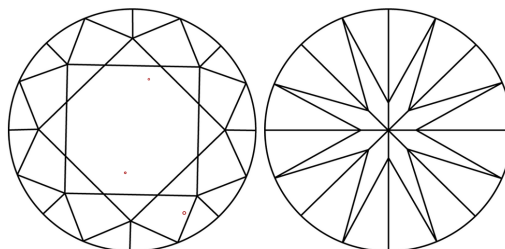
Comments: This Laboratory Grown Diamond was created by Chemical Vapor Deposition (CVD) growth process.  
Type IIa

LG763620919  
Report verification at [igi.org](https://igi.org)

## PROPORTIONS

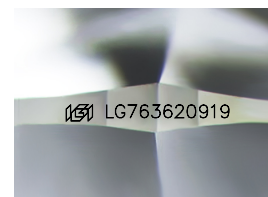


## CLARITY CHARACTERISTICS



### KEY TO SYMBOLS

Red symbols indicate internal characteristics.  
Green symbols indicate external characteristics.



Sample Image Used

## COLOR

D E F G H I J Faint Very Light Light

## CLARITY

| FL       | IF                  | VVS <sup>1-2</sup>          | VS <sup>1-2</sup>      | SI <sup>1-2</sup> | I <sup>1-3</sup> |
|----------|---------------------|-----------------------------|------------------------|-------------------|------------------|
| Flawless | Internally Flawless | Very Very Slightly Included | Very Slightly Included | Slightly Included | Included         |

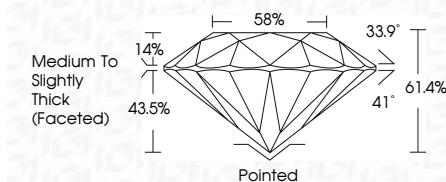
## LABORATORY GROWN DIAMOND REPORT



|                         |                          |
|-------------------------|--------------------------|
| January 4, 2026         |                          |
| IGI Report Number       | LG763620919              |
| Description             | LABORATORY GROWN DIAMOND |
| Shape and Cutting Style | ROUND BRILLIANT          |
| Measurements            | 8.20 - 8.23 X 5.05 MM    |

## GRADING RESULTS

|               |             |
|---------------|-------------|
| Carat Weight  | 2.09 CARATS |
| Color Grade   | D           |
| Clarity Grade | VS 1        |
| Cut Grade     | IDEAL       |



### ADDITIONAL GRADING INFORMATION

|   |   |
|---|---|
| Polish  | EXCELLENT   |
| Symmetry  | EXCELLENT   |
| Fluorescence  | NONE  |
| Inscription(s)  |  LG763620919 |
| <p>Comments: This Laboratory Grown Diamond was created by Chemical Vapor Deposition (CVD) growth process.</p> <p>Type IIa</p> |   |



© IGI 2020, International Gemological Institute

FD - 10 20



THIS DOCUMENT WAS PRODUCED WITH THE FOLLOWING SECURITY MEASURES: SPECIAL DOCUMENT PAPER, INK SCREENS, WATERMARK, BACKGROUND DESIGNS, HOLOGRAM AND OTHER SECURITY FEATURES NOT LISTED AND DO EXCEED DOCUMENT SECURITY INDUSTRY GUIDELINES

**www.igi.org**

January 4, 2026  
GI Report No LG763620919  
ROUND BRILLIANT

|                       |               |                                    |
|-----------------------|---------------|------------------------------------|
| 2.00 - 8.23 X 5.05 MM | Carat Weight  | 2.09 CARATS                        |
|                       | Color Grade   | D                                  |
|                       | Clarity Grade | VS 1                               |
|                       | Cut Grade     | IDEAL                              |
|                       | Depth         | 61.4%                              |
|                       | Table         | 58%                                |
|                       | Girdle        | Medium To Slightly Thick (Faceted) |
|                       | Culet         | Pointed                            |
|                       | Polish        | EXCELLENT                          |
|                       | Symmetry      | EXCELLENT                          |
|                       | Fluorescence  | NONE                               |
|                       | Reference(s)  | 4mm / 2743400010                   |

**Comments:**  
This Laboratory Grown Diamond was created by Chemical Vapor Deposition (CVD) growth process.