



**ELECTRONIC COPY**

LG763619185  
Report verification at igi.org



January 23, 2026  
IGI Report Number **LG763619185**  
Description **LABORATORY GROWN DIAMOND**  
Shape and Cutting Style **CUSHION MODIFIED BRILLIANT**  
Measurements **13.53 X 9.75 X 6.32 MM**  
**GRADING RESULTS**  
Carat Weight **7.53 CARATS**  
Color Grade **FANCY VIVID PINK ORANGE**  
Clarity Grade **VS 1**

January 23, 2026  
IGI Report Number **LG763619185**  
Description **LABORATORY GROWN DIAMOND**  
Shape and Cutting Style **CUSHION MODIFIED BRILLIANT**  
Measurements **13.53 X 9.75 X 6.32 MM**

**GRADING RESULTS**

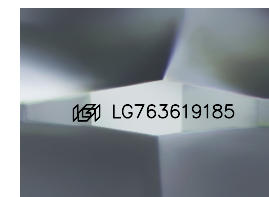
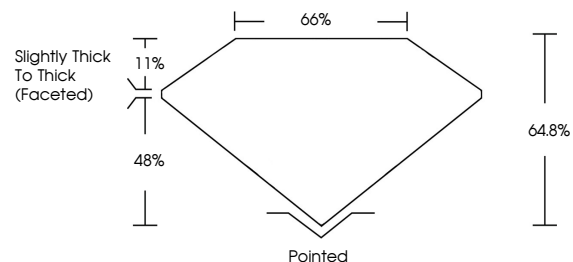
Carat Weight **7.53 CARATS**  
Color Grade **FANCY VIVID PINK ORANGE**  
Clarity Grade **VS 1**

**ADDITIONAL GRADING INFORMATION**

Polish **EXCELLENT**  
Symmetry **EXCELLENT**  
Fluorescence **SLIGHT**  
Inscription(s) **IGI LG763619185**

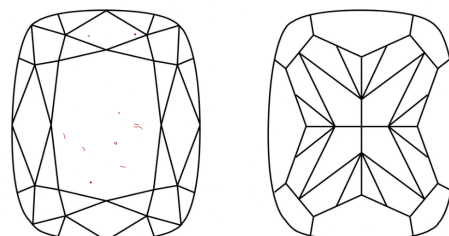
Comments: This Laboratory Grown Diamond was created by Chemical Vapor Deposition (CVD) growth process. Indications of post-growth treatment.

**PROPORTIONS**



Sample Image Used

**CLARITY CHARACTERISTICS**



**KEY TO SYMBOLS**

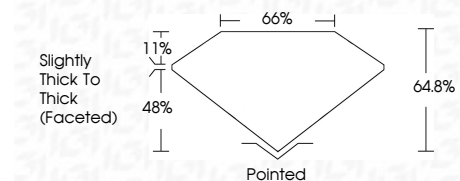
Red symbols indicate internal characteristics.  
Green symbols indicate external characteristics.

**COLOR**

D E F G H I J Faint Very Light Light

**CLARITY**

FL	IF	VS <sup>1-2</sup>	VS <sup>1-2</sup>	SI <sup>1-2</sup>	I <sup>1-3</sup>
Flawless	Internally Flawless	Very Very Slightly Included	Very Slightly Included	Slightly Included	Included



**ADDITIONAL GRADING INFORMATION**

Polish **EXCELLENT**  
Symmetry **EXCELLENT**  
Fluorescence **SLIGHT**  
Inscription(s) **IGI LG763619185**  
Comments: This Laboratory Grown Diamond was created by Chemical Vapor Deposition (CVD) growth process. Indications of post-growth treatment.



January 23, 2026  
IGI Report No LG763619185  
CUSHION MODIFIED BRILLIANT  
13.53 X 9.75 X 6.32 MM  
7.53 CARATS  
FANCY VIVID PINK ORANGE  
VS 1  
64.8%  
66%  
Slightly Thick To Thick (Faceted)  
Pointed  
EXCELLENT  
EXCELLENT  
SLIGHT  
IGI LG763619185

Comments: This Laboratory Grown Diamond was created by Chemical Vapor Deposition (CVD) growth process. Indications of post-growth treatment.