



January 17, 2026

IGI Report Number **LG763619056**

OVAL BRILLIANT
LABORATORY GROWN DIAMOND
7.24 X 5.09 X 3.02 MM

Carat Weight **0.72 CARAT**
Color Grade **E**
Clarity Grade **VS 2**
Polish **GOOD**
Symmetry **VERY GOOD**
Fluorescence **NONE**
Inscription(s) **IGI LG763619056**

Comments: This Laboratory Grown Diamond was created by Chemical Vapor Deposition (CVD) growth process. Type IIa

LABORATORY GROWN DIAMOND REPORT

January 17, 2026
IGI Report Number **LG763619056**
Description **LABORATORY GROWN DIAMOND**
Shape and Cutting Style **OVAL BRILLIANT**
Measurements **7.24 X 5.09 X 3.02 MM**

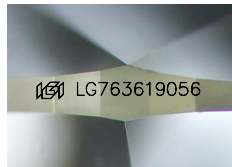
GRADING RESULTS

Carat Weight **0.72 CARAT**
Color Grade **E**
Clarity Grade **VS 2**

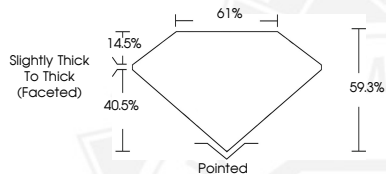
ADDITIONAL GRADING INFORMATION

Polish **GOOD**
Symmetry **VERY GOOD**
Fluorescence **NONE**
Inscription(s) **IGI LG763619056**

Comments: This Laboratory Grown Diamond was created by Chemical Vapor Deposition (CVD) growth process.
Type IIa



Sample Image Used



January 17, 2026

IGI Report Number **LG763619056**

OVAL BRILLIANT
LABORATORY GROWN DIAMOND
7.24 X 5.09 X 3.02 MM

Carat Weight **0.72 CARAT**
Color Grade **E**
Clarity Grade **VS 2**
Polish **GOOD**
Symmetry **VERY GOOD**
Fluorescence **NONE**
Inscription(s) **IGI LG763619056**

Comments: This Laboratory Grown Diamond was created by Chemical Vapor Deposition (CVD) growth process. Type IIa



THIS DOCUMENT WAS PRODUCED WITH THE FOLLOWING SECURITY MEASURES: SPECIAL DOCUMENT PAPER, INK SCREENS, WATERMARK, BACKGROUND DESIGNS, HOLOGRAM AND OTHER SECURITY FEATURES NOT LISTED AND DO EXCEED DOCUMENT SECURITY INDUSTRY GUIDELINES.