



LABORATORY GROWN DIAMOND REPORT

January 17, 2026
 IGI Report Number **LG763619054**
 Description **LABORATORY GROWN DIAMOND**
 Shape and Cutting Style **OVAL BRILLIANT**
 Measurements **7.45 X 4.94 X 3.03 MM**

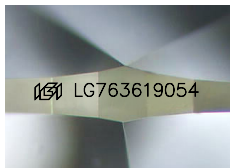
GRADING RESULTS

Carat Weight **0.73 CARAT**
 Color Grade **F**
 Clarity Grade **SI 1**

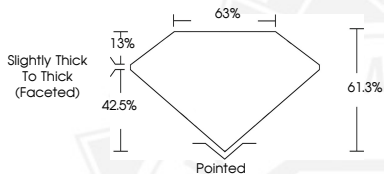
ADDITIONAL GRADING INFORMATION

Polish **VERY GOOD**
 Symmetry **VERY GOOD**
 Fluorescence **NONE**
 Inscription(s) **IGI LG763619054**

Comments: This Laboratory Grown Diamond was created by
 Chemical Vapor Deposition (CVD) growth process.
 Type IIa



Sample Image Used



January 17, 2026
 IGI Report Number **LG763619054**
OVAL BRILLIANT
LABORATORY GROWN DIAMOND
7.45 X 4.94 X 3.03 MM
 Carat Weight **0.73 CARAT**
 Color Grade **F**
 Clarity Grade **SI 1**
 Polish **VERY GOOD**
 Symmetry **VERY GOOD**
 Fluorescence **NONE**
 Inscription(s) **IGI LG763619054**

Comments: This Laboratory Grown Diamond was created by
 Chemical Vapor Deposition (CVD) growth process. Type IIa



January 17, 2026
 IGI Report Number **LG763619054**
OVAL BRILLIANT
LABORATORY GROWN DIAMOND
7.45 X 4.94 X 3.03 MM
 Carat Weight **0.73 CARAT**
 Color Grade **F**
 Clarity Grade **SI 1**
 Polish **VERY GOOD**
 Symmetry **VERY GOOD**
 Fluorescence **NONE**
 Inscription(s) **IGI LG763619054**

Comments: This Laboratory Grown Diamond was created by
 Chemical Vapor Deposition (CVD) growth process. Type IIa



THIS DOCUMENT WAS PRODUCED WITH THE FOLLOWING SECURITY MEASURES: SPECIAL DOCUMENT PAPER, INK SCREENS, WATERMARK, BACKGROUND DESIGNS, HOLOGRAM AND OTHER SECURITY FEATURES NOT LISTED AND DO EXCEED DOCUMENT SECURITY INDUSTRY GUIDELINES.