



January 7, 2026

**IGI Report Number LG763618901**  
**SQUARE CUSHION MODIFIED**  
**BRILLIANT**

**LABORATORY GROWN DIAMOND**  
**5.84 X 5.76 X 3.82 MM**

Carat Weight **0.98 CARAT**  
Color Grade **D**  
Clarity Grade **VS 2**  
Polish **EXCELLENT**  
Symmetry **EXCELLENT**  
Fluorescence **NONE**  
Inscription(s) **IGI LG763618901**

Comments: As Grown - No indication of post-growth treatment. This Laboratory Grown Diamond was created by High Pressure High Temperature (HPHT) growth process. Type II

**LABORATORY GROWN DIAMOND REPORT**

January 7, 2026

IGI Report Number

**LG763618901**

Description

**LABORATORY GROWN DIAMOND**

Shape and Cutting Style

**SQUARE CUSHION MODIFIED BRILLIANT**

Measurements

**5.84 X 5.76 X 3.82 MM**

**GRADING RESULTS**

Carat Weight

**0.98 CARAT**

Color Grade

**D**

Clarity Grade

**VS 2**

**ADDITIONAL GRADING INFORMATION**

Polish

**EXCELLENT**

Symmetry

**EXCELLENT**

Fluorescence

**NONE**

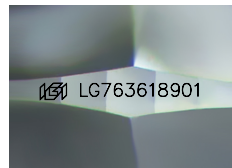
Inscription(s)

**IGI LG763618901**

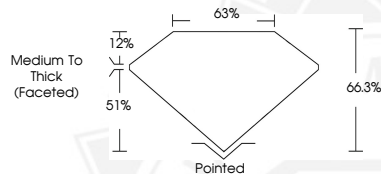
Comments: As Grown - No indication of post-growth treatment.

This Laboratory Grown Diamond was created by High Pressure High Temperature (HPHT) growth process.

Type II



Sample Image Used



January 7, 2026

**IGI Report Number LG763618901**  
**SQUARE CUSHION MODIFIED**  
**BRILLIANT**

**LABORATORY GROWN DIAMOND**  
**5.84 X 5.76 X 3.82 MM**

Carat Weight **0.98 CARAT**  
Color Grade **D**  
Clarity Grade **VS 2**  
Polish **EXCELLENT**  
Symmetry **EXCELLENT**  
Fluorescence **NONE**  
Inscription(s) **IGI LG763618901**

Comments: As Grown - No indication of post-growth treatment. This Laboratory Grown Diamond was created by High Pressure High Temperature (HPHT) growth process. Type II



THIS DOCUMENT WAS PRODUCED WITH THE FOLLOWING SECURITY MEASURES: SPECIAL DOCUMENT PAPER, INK SCREENS, WATERMARK, BACKGROUND DESIGNS, HOLOGRAM AND OTHER SECURITY FEATURES NOT LISTED AND DO EXCEED DOCUMENT SECURITY INDUSTRY GUIDELINES.