



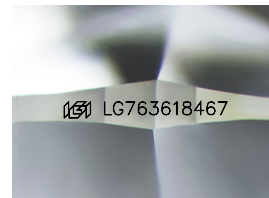
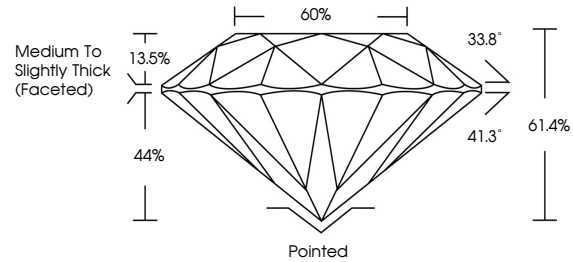
**INTERNATIONAL
GEMOLOGICAL
INSTITUTE**

ELECTRONIC COPY

LABORATORY GROWN DIAMOND REPORT

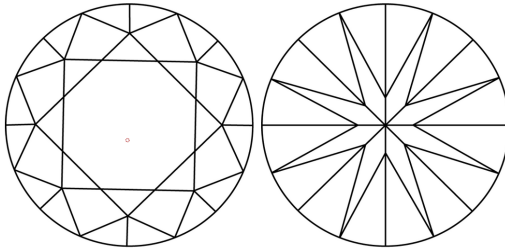
LG763618467
Report verification at igi.org

PROPORTIONS



Sample Image Used

CLARITY CHARACTERISTICS



KEY TO SYMBOLS

Red symbols indicate internal characteristics.
Green symbols indicate external characteristics.

COLOR

D E F G H I J Faint Very Light Light

CLARITY

FL IF WS¹⁻² VS¹⁻² SI¹⁻² I¹⁻³

Flawless	Internally Flawless	Very Very Slightly Included	Very Slightly Included	Slightly Included	Included
----------	---------------------	-----------------------------	------------------------	-------------------	----------



January 7, 2026

IGI Report Number **LG763618467**

Description	LABORATORY GROWN DIAMOND
-------------	--------------------------

Shape and Cutting Style **ROUND BRILLIANT**

Measurements	8.10 - 8.14 X 4.99 MM
--------------	-----------------------

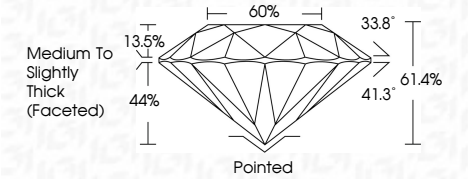
GRADING RESULTS

Carat Weight **2.03 CARATS**

Color Grade **E**

Clarity Grade WS 2

Cut Grade **IDEAL**



ADDITIONAL GRADING INFORMATION

Polish **EXCELLENT**

Symmetry **EXCELLENT**

Fluorescence **NONE**Inscription(s) LG763618467

Comments: This Laboratory Grown Diamond was created by Chemical Vapor Deposition (CVD) growth process.
Type IIa



IGI



© IGI 2020, International Gemological Institute

FD - 10 20

www.igi.org

THIS DOCUMENT WAS PRODUCED WITH THE FOLLOWING SECURITY MEASURES: SPECIAL DOCUMENT PAPER, INK SCREENS, WATERMARK BACKGROUND DESIGNS, HOLOGRAM AND OTHER SECURITY FEATURES NOT LISTED AND DO EXCEED DOCUMENT SECURITY INDUSTRY GUIDELINES

January 7, 2026
IGI Report No LG763618467
ROUND BRILLIANT

8.10 - 8.14 X 4.99 MM	218 CARATS	E	VVS 2	IDEAL	61.6%	60%	Medium to Slightly Thick Faceted	Pointed	EXCELLENT	EXCELLENT	NONE	889 LG76318407
Carat Weight	Color Grade	Clarity Grade	Cut Grade	Depth	Table	Girdle		Quiet	Symmetry	Fluorescence	Inscription(s)	
								Polish				

Comments:
This Laboratory Grown Diamond was created by Chemical Vapor Deposition (CVD) growth process.
Type IIa