



**ELECTRONIC COPY**

LG763616476  
Report verification at igi.org



January 21, 2026  
IGI Report Number **LG763616476**  
Description **LABORATORY GROWN DIAMOND**  
Shape and Cutting Style **OVAL MODIFIED BRILLIANT**  
Measurements **11.82 X 8.18 X 5.32 MM**  
**GRADING RESULTS**  
Carat Weight **4.01 CARATS**  
Color Grade **FANCY INTENSE YELLOW**  
Clarity Grade **VS 2**

January 21, 2026  
IGI Report Number **LG763616476**  
Description **LABORATORY GROWN DIAMOND**  
Shape and Cutting Style **OVAL MODIFIED BRILLIANT**  
Measurements **11.82 X 8.18 X 5.32 MM**

**GRADING RESULTS**

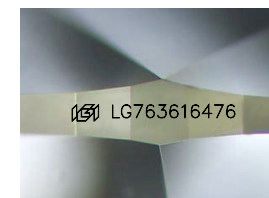
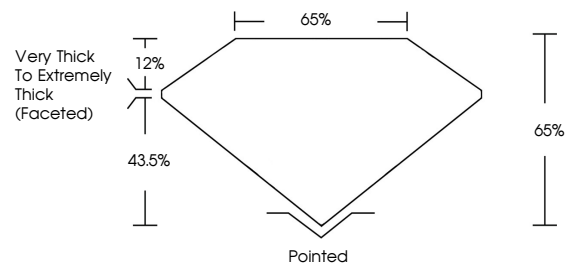
Carat Weight **4.01 CARATS**  
Color Grade **FANCY INTENSE YELLOW**  
Clarity Grade **VS 2**

**ADDITIONAL GRADING INFORMATION**

Polish **EXCELLENT**  
Symmetry **EXCELLENT**  
Fluorescence **NONE**  
Inscription(s) **IGI LG763616476**

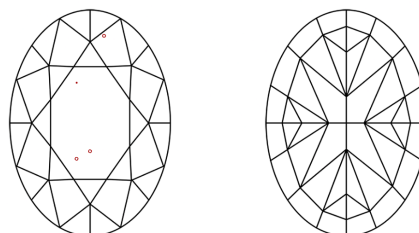
Comments: This Laboratory Grown Diamond was created by Chemical Vapor Deposition (CVD) growth process.

**PROPORTIONS**



Sample Image Used

**CLARITY CHARACTERISTICS**



**KEY TO SYMBOLS**

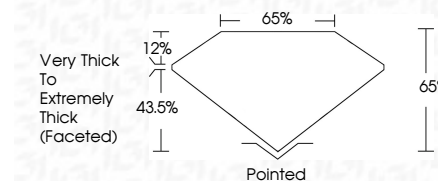
Red symbols indicate internal characteristics.  
Green symbols indicate external characteristics.

**COLOR**

D E F G H I J Faint Very Light Light

**CLARITY**

FL	IF	VS <sup>1-2</sup>	VS <sup>1-2</sup>	SI <sup>1-2</sup>	I <sup>1-3</sup>
Flawless	Internally Flawless	Very Very Slightly Included	Very Slightly Included	Slightly Included	Included



**ADDITIONAL GRADING INFORMATION**

Polish **EXCELLENT**  
Symmetry **EXCELLENT**  
Fluorescence **NONE**  
Inscription(s) **IGI LG763616476**  
Comments: This Laboratory Grown Diamond was created by Chemical Vapor Deposition (CVD) growth process.



January 21, 2026  
IGI Report No LG763616476  
OVAL MODIFIED BRILLIANT  
4.01 CARATS  
FANCY INTENSE YELLOW  
VS 2  
11.82 X 8.18 X 5.32 MM  
Color Grade  
FANCY INTENSE YELLOW  
Clarity Grade  
VS 2  
Depth  
65%  
Table  
65%  
Girdle  
Very Thick to Extremely Thick (Faceted)  
Culet  
Pointed  
Polish  
EXCELLENT  
Symmetry  
EXCELLENT  
Fluorescence  
NONE  
Inscription(s)  
IGI LG763616476  
Comments: This Laboratory Grown Diamond was created by Chemical Vapor Deposition (CVD) growth process.