



**ELECTRONIC COPY**

## LABORATORY GROWN DIAMOND REPORT

January 5, 2026	
IGI Report Number	LG763612794
Description	LABORATORY GROWN DIAMOND
Shape and Cutting Style	ROUND BRILLIANT
Measurements	6.55 - 6.58 X 3.95 MM
GRADING RESULTS	
Carat Weight	1.05 CARAT
Color Grade	D
Clarity Grade	VS 1
Cut Grade	IDEAL

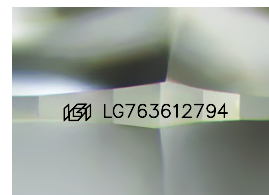
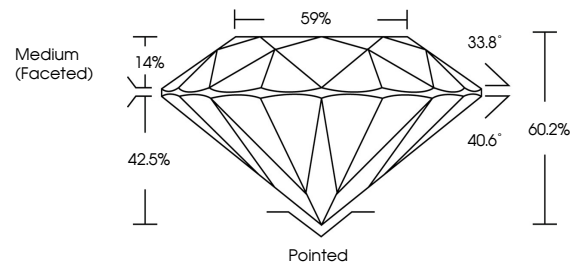
### ADDITIONAL GRADING INFORMATION

Polish	EXCELLENT
Symmetry	EXCELLENT
Fluorescence	NONE
Inscription(s)	15 LG763612794

Comments: As Grown - No indication of post-growth treatment.  
This Laboratory Grown Diamond was created by High Pressure High Temperature (HPHT) growth process.  
Type II

LG763612794  
Report verification at [lgi.org](https://lgi.org)

## PROPORTIONS



Sample Image Used

## COLOR

D E F G H I J Faint Very Light Light

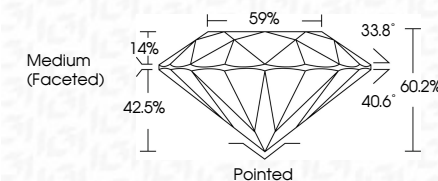
## CLARITY

FL	IF	VVS <sup>1-2</sup>	VS <sup>1-2</sup>	SI <sup>1-2</sup>	I <sup>1-3</sup>
Flawless	Internally Flawless	Very Very Slightly Included	Very Slightly Included	Slightly Included	Included

## LABORATORY GROWN DIAMOND REPORT



January 5, 2026	
IGI Report Number	LG763612794
Description	LABORATORY GROWN DIAMOND
Shape and Cutting Style	ROUND BRILLIANT
Measurements	6.55 - 6.58 X 3.95 MM
GRADING RESULTS	
Carat Weight	1.05 CARAT
Color Grade	D
Clarity Grade	VS 1
Cut Grade	IDEAL



### ADDITIONAL GRADING INFORMATION

Polish	EXCELLENT
Symmetry	EXCELLENT
Fluorescence	NONE
Inscription(s)	<del>(G)</del> LG763612794
Comments: As Grown - No indication of post-growth treatment.	
This Laboratory Grown Diamond was created by High Pressure High Temperature (HPHT) growth process.	
Type II	



© IGI 2020, International Gemological Institute

FD - 10 20

**www.igi.org**



THIS DOCUMENT WAS PRODUCED WITH THE FOLLOWING SECURITY MEASURES: SPECIAL DOCUMENT PAPER, INK SCREENS, WATERMARK, BACKGROUND DESIGNS, HOLOGRAM AND OTHER SECURITY FEATURES NOT LISTED AND DO EXCEED DOCUMENT SECURITY INDUSTRY GUIDELINE

January 5, 2026  
GI Report No LG763612794  
ROUND BRILLIANT

6.56 - 6.59 X 3.95 MM	1.05 CARAT	D
Carat Weight	VS 1	IDEAL
Color Grade	60.2%	59%
Clarity Grade	Medium (Faceted)	
Depth		
Table		
Girdle		
Culet		
Polish		
Symmetry		
Fluorescence		
Reported Measurements		

**Comments:**  
As Grown - No indication of post-growth treatment.