



ELECTRONIC COPY

LABORATORY GROWN DIAMOND REPORT

LG763612622
Report verification at igi.org

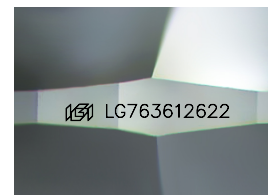
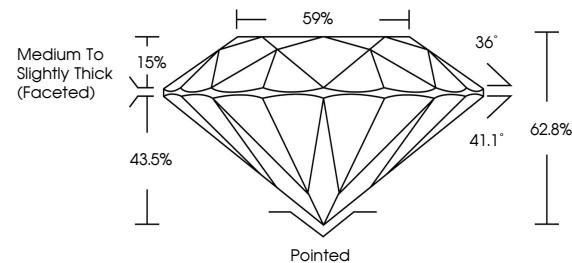
January 5, 2026	
IGI Report Number	LG763612622
Description	LABORATORY GROWN DIAMOND
Shape and Cutting Style	ROUND BRILLIANT
Measurements	7.97 - 8.00 X 5.01 MM
GRADING RESULTS	
Carat Weight	2.00 CARATS
Color Grade	E
Clarity Grade	VVS 2
Cut Grade	EXCELLENT

ADDITIONAL GRADING INFORMATION

Polish	EXCELLENT
Symmetry	EXCELLENT
Fluorescence	NONE
Inscription(s)	 LG763612622

Comments: This Laboratory Grown Diamond was created by Chemical Vapor Deposition (CVD) growth process.
Type IIa

PROPORTIONS



Sample Image Used

COLOR

D E F G H I J Faint Very Light Light

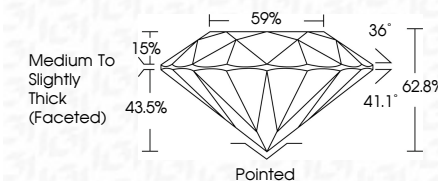
CLARITY

FL	IF	VVS ¹⁻²	VS ¹⁻²	SI ¹⁻²	I ¹⁻³
Flawless	Internally Flawless	Very Very Slightly Included	Very Slightly Included	Slightly Included	Included

LABORATORY GROWN DIAMOND REPORT



January 5, 2026	
IGI Report Number	LG763612622
Description	LABORATORY GROWN DIAMOND
Shape and Cutting Style	ROUND BRILLIANT
Measurements	7.97 - 8.00 X 5.01 MM
GRADING RESULTS	
Carat Weight	2.00 CARATS
Color Grade	E
Clarity Grade	VVS 2
Cut Grade	EXCELLENT



ADDITIONAL GRADING INFORMATION

Polish	EXCELLENT
Symmetry	EXCELLENT
Fluorescence	NONE
Inscription(s)	 LG763612622
<p>Comments: This Laboratory Grown Diamond was created by Chemical Vapor Deposition (CVD) growth process.</p> <p>Type IIa</p>	



© IGI 2020, International Gemological Institute

FD - 10 20



THIS DOCUMENT WAS PRODUCED WITH THE FOLLOWING SECURITY MEASURES: SPECIAL DOCUMENT PAPER, INK SCREENS, WATERMARK, BACKGROUND DESIGNS, HOLOGRAM AND OTHER SECURITY FEATURES NOT LISTED AND DO EXCEED DOCUMENT SECURITY INDUSTRY GUIDELINES

www.igi.org

January 5, 2026
GI Report No LG763612622

IGI Report No LG76

ROUND BRILLIANT

7.97 - 8.00 X 5.01 MM
Carat Weight
2.00 CARATS

Color Grade E

Clarity Grade	WS 2
FL	0.00
IF	0.01
I1	0.03
I2	0.05
S1	0.10
S2	0.15
S3	0.20
S4	0.25
S5	0.30
S6	0.35
S7	0.40
S8	0.45
S9	0.50
S10	0.55
S11	0.60
S12	0.65
S13	0.70
S14	0.75
S15	0.80
S16	0.85
S17	0.90
S18	0.95
S19	1.00
S20	1.05
S21	1.10
S22	1.15
S23	1.20
S24	1.25
S25	1.30
S26	1.35
S27	1.40
S28	1.45
S29	1.50
S30	1.55
S31	1.60
S32	1.65
S33	1.70
S34	1.75
S35	1.80
S36	1.85
S37	1.90
S38	1.95
S39	2.00
S40	2.05
S41	2.10
S42	2.15
S43	2.20
S44	2.25
S45	2.30
S46	2.35
S47	2.40
S48	2.45
S49	2.50
S50	2.55
S51	2.60
S52	2.65
S53	2.70
S54	2.75
S55	2.80
S56	2.85
S57	2.90
S58	2.95
S59	3.00
S60	3.05
S61	3.10
S62	3.15
S63	3.20
S64	3.25
S65	3.30
S66	3.35
S67	3.40
S68	3.45
S69	3.50
S70	3.55
S71	3.60
S72	3.65
S73	3.70
S74	3.75
S75	3.80
S76	3.85
S77	3.90
S78	3.95
S79	4.00
S80	4.05
S81	4.10
S82	4.15
S83	4.20
S84	4.25
S85	4.30
S86	4.35
S87	4.40
S88	4.45
S89	4.50
S90	4.55
S91	4.60
S92	4.65
S93	4.70
S94	4.75
S95	4.80
S96	4.85
S97	4.90
S98	4.95
S99	5.00
S100	5.05
S101	5.10
S102	5.15
S103	5.20
S104	5.25
S105	5.30
S106	5.35
S107	5.40
S108	5.45
S109	5.50
S110	5.55
S111	5.60
S112	5.65
S113	5.70
S114	5.75
S115	5.80
S116	5.85
S117	5.90
S118	5.95
S119	6.00
S120	6.05
S121	6.10
S122	6.15
S123	6.20
S124	6.25
S125	6.30
S126	6.35
S127	6.40
S128	6.45
S129	6.50
S130	6.55
S131	6.60
S132	6.65
S133	6.70
S134	6.75
S135	6.80
S136	6.85
S137	6.90
S138	6.95
S139	7.00
S140	7.05
S141	7.10
S142	7.15
S143	7.20
S144	7.25
S145	7.30
S146	7.35
S147	7.40
S148	7.45
S149	7.50
S150	7.55
S151	7.60
S152	7.65
S153	7.70
S154	7.75
S155	7.80
S156	7.85
S157	

	Cut Grade	
	Depth	
EXCELLENT		86-97

Dep III	0.00%
Table	59%

Girdle

1111X (revised)

Country	Polished	Pointed
Cuba	EXCELLENT	Pointed
Polish	EXCELLENT	Pointed

Symmetry

Fluorescence	None
Inscription(s)	1681 G763612622

1001.000.001.461

Comments:
This Laboratory Grown Diamond was

created by Chemical Vapor Deposition (CVD) growth process.

Type IIa