



January 9, 2026

IGI Report Number **LG763609023**

**PRINCESS CUT**  
**LABORATORY GROWN DIAMOND**  
**4.56 X 4.55 X 3.08 MM**  
Carat Weight **0.55 CARAT**  
Color Grade **F**  
Clarity Grade **VVS 2**  
Polish **EXCELLENT**  
Symmetry **EXCELLENT**  
Fluorescence **NONE**  
Inscription(s) **IGI LG763609023**

Comments: As Grown - No indication of post-growth treatment. This Laboratory Grown Diamond was created by High Pressure High Temperature (HPHT) growth process. Type II

**LABORATORY GROWN DIAMOND REPORT**

January 9, 2026  
IGI Report Number **LG763609023**  
Description **LABORATORY GROWN DIAMOND**  
Shape and Cutting Style **PRINCESS CUT**  
Measurements **4.56 X 4.55 X 3.08 MM**

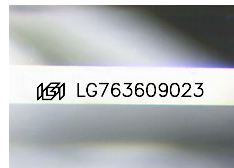
**GRADING RESULTS**

Carat Weight **0.55 CARAT**  
Color Grade **F**  
Clarity Grade **VVS 2**

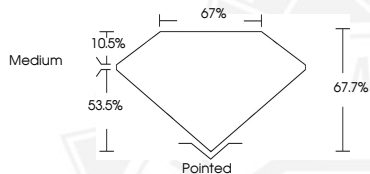
**ADDITIONAL GRADING INFORMATION**

Polish **EXCELLENT**  
Symmetry **EXCELLENT**  
Fluorescence **NONE**  
Inscription(s) **IGI LG763609023**

Comments: As Grown - No indication of post-growth treatment. This Laboratory Grown Diamond was created by High Pressure High Temperature (HPHT) growth process. Type II



Sample Image Used



January 9, 2026

IGI Report Number **LG763609023**

**PRINCESS CUT**  
**LABORATORY GROWN DIAMOND**  
**4.56 X 4.55 X 3.08 MM**  
Carat Weight **0.55 CARAT**  
Color Grade **F**  
Clarity Grade **VVS 2**  
Polish **EXCELLENT**  
Symmetry **EXCELLENT**  
Fluorescence **NONE**  
Inscription(s) **IGI LG763609023**

Comments: As Grown - No indication of post-growth treatment. This Laboratory Grown Diamond was created by High Pressure High Temperature (HPHT) growth process. Type II



THIS DOCUMENT WAS PRODUCED WITH THE FOLLOWING SECURITY MEASURES: SPECIAL DOCUMENT PAPER, INK SCREENS, WATERMARK, BACKGROUND DESIGNS, HOLOGRAM AND OTHER SECURITY FEATURES NOT LISTED AND DO EXCEED DOCUMENT SECURITY INDUSTRY GUIDELINES.