



ELECTRONIC COPY

LG763607805
Report verification at igi.org



January 6, 2026

IGI Report Number **LG763607805**

Description **LABORATORY GROWN DIAMOND**

Shape and Cutting Style **PEAR BRILLIANT**

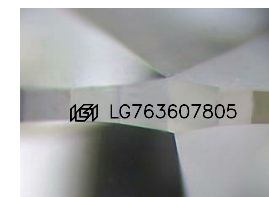
Measurements **8.64 X 5.54 X 3.51 MM**

GRADING RESULTS

Carat Weight **1.03 CARAT**

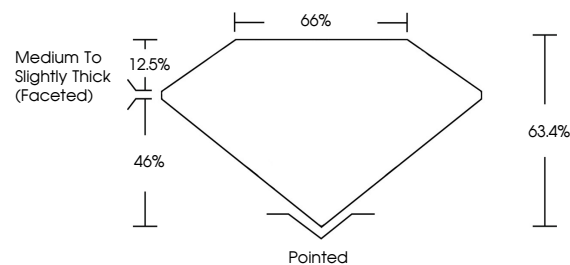
Color Grade **F**

Clarity Grade **VS 2**

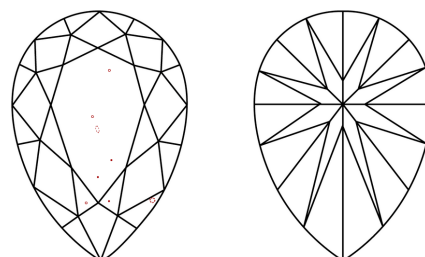


Sample Image Used

PROPORTIONS



CLARITY CHARACTERISTICS



KEY TO SYMBOLS

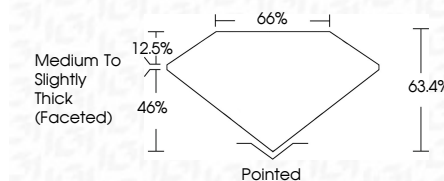
Red symbols indicate internal characteristics.
Green symbols indicate external characteristics.

COLOR

D E F G H I J Faint Very Light Light

CLARITY

FL	IF	VS ¹⁻²	VS ¹⁻²	SI ¹⁻²	I ¹⁻³
Flawless	Internally Flawless	Very Very Slightly Included	Very Slightly Included	Slightly Included	Included



ADDITIONAL GRADING INFORMATION

Polish **EXCELLENT**

Symmetry **VERY GOOD**

Fluorescence **NONE**

Inscription(s) **IGI LG763607805**

Comments: This Laboratory Grown Diamond was created by Chemical Vapor Deposition (CVD) growth process. Type IIa



IGI



January 6, 2026
IGI Report No LG763607805
PEAR BRILLIANT

1.03 CARAT
F

8.64 X 5.54 X 3.51 MM
Color Grade
Depth
Table
Girdle
Medium to Slightly Thick (Faceted)

63.4%
65%

Pointed
EXCELLENT
VERY GOOD
NONE
IGI LG763607805

Culet
Polish
Symmetry
Fluorescence
Inscription(s)

Comments: This Laboratory Grown Diamond was created by Chemical Vapor Deposition (CVD) growth process. Type IIa