



ELECTRONIC COPY

LABORATORY GROWN DIAMOND REPORT

January 13, 2026  
IGI Report Number **LG763606478**  
Description **LABORATORY GROWN DIAMOND**  
Shape and Cutting Style **PEAR MODIFIED BRILLIANT**  
Measurements **8.11 X 5.33 X 3.46 MM**

GRADING RESULTS

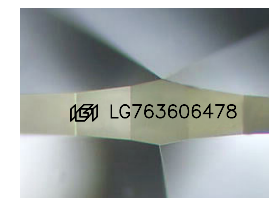
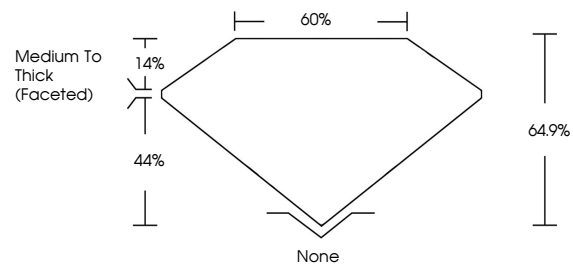
Carat Weight **1.11 CARAT**  
Color Grade **FANCY INTENSE PINK**  
Clarity Grade **SI 1**

ADDITIONAL GRADING INFORMATION

Polish **EXCELLENT**  
Symmetry **EXCELLENT**  
Fluorescence **SLIGHT**  
Inscription(s) **LG763606478**

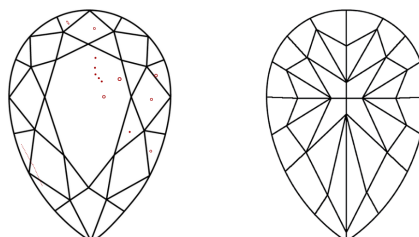
Comments: This Laboratory Grown Diamond was created by Chemical Vapor Deposition (CVD) growth process.  
Indications of post-growth treatment.

PROPORTIONS



Sample Image Used

CLARITY CHARACTERISTICS



KEY TO SYMBOLS

Red symbols indicate internal characteristics.  
Green symbols indicate external characteristics.

COLOR

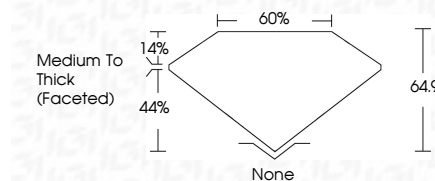
D E F G H I J Faint Very Light Light

CLARITY

FL IF VS<sup>1-2</sup> VS<sup>1-2</sup> SI<sup>1-2</sup> I<sup>1-3</sup>  
Flawless Internally Flawless Very Very Slightly Included Very Slightly Included Slightly Included Included



January 13, 2026  
IGI Report Number **LG763606478**  
Description **LABORATORY GROWN DIAMOND**  
Shape and Cutting Style **PEAR MODIFIED BRILLIANT**  
Measurements **8.11 X 5.33 X 3.46 MM**  
**GRADING RESULTS**  
Carat Weight **1.11 CARAT**  
Color Grade **FANCY INTENSE PINK**  
Clarity Grade **SI 1**



ADDITIONAL GRADING INFORMATION

Polish **EXCELLENT**  
Symmetry **EXCELLENT**  
Fluorescence **SLIGHT**  
Inscription(s) **LG763606478**  
Comments: This Laboratory Grown Diamond was created by Chemical Vapor Deposition (CVD) growth process.  
Indications of post-growth treatment.



January 13, 2026  
IGI Report No **LG763606478**  
**PEAR MODIFIED BRILLIANT**  
**8.11 X 5.33 X 3.46 MM**  
Carat Weight **1.11 CARAT**  
Color Grade **FANCY INTENSE PINK**  
Clarity Grade **SI 1**  
Depth **64.9%**  
Table **60%**  
Girdle **Medium To Thick (Faceted)**  
Culet **None**  
Polish **EXCELLENT**  
Symmetry **EXCELLENT**  
Fluorescence **SLIGHT**  
Inscription(s) **LG763606478**  
Comments: This Laboratory Grown Diamond was created by Chemical Vapor Deposition (CVD) growth process.  
Indications of post-growth treatment.