



ELECTRONIC COPY

LABORATORY GROWN DIAMOND REPORT

| | |
|-------------------------|--------------------------|
| January 3, 2026 | |
| IGI Report Number | LG763606106 |
| Description | LABORATORY GROWN DIAMOND |
| Shape and Cutting Style | ROUND BRILLIANT |
| Measurements | 7.99 - 8.04 X 5.00 MM |

GRADING RESULTS

| | |
|---------------|-------------|
| Carat Weight | 2.00 CARATS |
| Color Grade | E |
| Clarity Grade | VS 2 |
| Cut Grade | IDEAL |

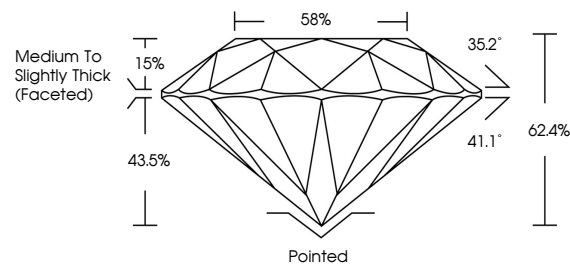
ADDITIONAL GRADING INFORMATION

| | |
|----------------|---|
| Polish | EXCELLENT |
| Symmetry | EXCELLENT |
| Fluorescence | NONE |
| Inscription(s) |  LG763606106 |

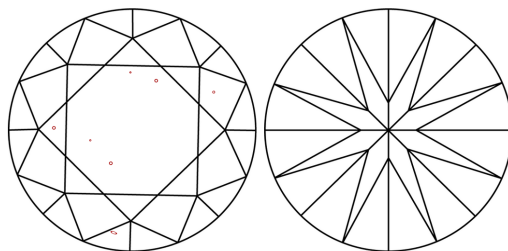
Comments: This Laboratory Grown Diamond was created by Chemical Vapor Deposition (CVD) growth process.
Type IIa

LG763606106
Report verification at igi.org

PROPORTIONS

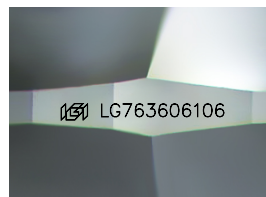


CLARITY CHARACTERISTICS



KEY TO SYMBOLS

Red symbols indicate internal characteristics.
Green symbols indicate external characteristics.



Sample Image Used

COLOR

D E F G H I J Faint Very Light Light

CLARITY

| FL | IF | VVS ¹⁻² | VS ¹⁻² | SI ¹⁻² | I ¹⁻³ |
|----------|---------------------|-----------------------------|------------------------|-------------------|------------------|
| Flawless | Internally Flawless | Very Very Slightly Included | Very Slightly Included | Slightly Included | Included |

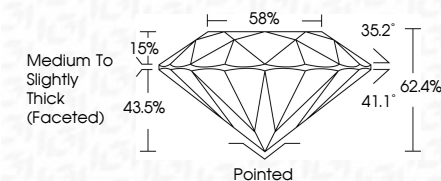
LABORATORY GROWN DIAMOND REPORT



| | |
|-------------------------|--------------------------|
| January 3, 2026 | |
| IGI Report Number | LG763606106 |
| Description | LABORATORY GROWN DIAMOND |
| Shape and Cutting Style | ROUND BRILLIANT |
| Measurements | 7.99 - 8.04 X 5.00 MM |

GRADING RESULTS

| | |
|---------------|-------------|
| Carat Weight | 2.00 CARATS |
| Color Grade | E |
| Clarity Grade | VS 2 |
| Cut Grade | IDEAL |



ADDITIONAL GRADING INFORMATION

| | |
|---|--|
| Polish | EXCELLENT |
| Symmetry | EXCELLENT |
| Fluorescence | NONE |
| Inscription(s) |  LG763606106 |
| <p>Comments: This Laboratory Grown Diamond was created by Chemical Vapor Deposition (CVD) growth process.</p> <p>Type IIa</p> | |



IG



© IGI 2020, International Gemological Institute

FD - 10 20

www.igi.org

THIS DOCUMENT WAS PRODUCED WITH THE FOLLOWING SECURITY MEASURES: SPECIAL DOCUMENT PAPER, INK SCREENS, WATERMARK, BACKGROUND DESIGNS, HOLOGRAM AND OTHER SECURITY FEATURES NOT LISTED AND DO EXCEED DOCUMENT SECURITY INDUSTRY GUIDELINES

January 3, 2026
IGI Report No LG763606106
ROUND BRILLIANT

| | | | |
|-----------------------|---------------|-------------------------------------|-------------|
| 7.99 - 8.04 X 5.00 MM | Color Grade | VS 2 | 2.00 CARATS |
| Carat Weight | Clarity Grade | IDEAL | E |
| Cut Grade | Cut Grade | 62.4% | |
| Depth | Table | 58% | |
| Girdle | Girdle | Medium to slightly Thick (facet-to) | |
| Culet | Culet | Pointed | |
| Polish | Polish | EXCELLENT | |
| Symmetry | Symmetry | EXCELLENT | |
| Fluorescence | Fluorescence | NONE | |
| Comments | Comments | See 12749494014 | |

Comments:
This Laboratory Grown Diamond was created by Chemical Vapor Deposition (CVD) growth process.