



**ELECTRONIC COPY**

LG763601011  
Report verification at igi.org



January 9, 2026  
IGI Report Number **LG763601011**  
Description **LABORATORY GROWN DIAMOND**  
Shape and Cutting Style **KITE STEP CUT**  
Measurements **23.64 X 14.29 X 7.10 MM**  
**GRADING RESULTS**  
Carat Weight **11.54 CARATS**  
Color Grade **G**  
Clarity Grade **VVS 2**

**LABORATORY GROWN DIAMOND REPORT**

January 9, 2026  
IGI Report Number **LG763601011**  
Description **LABORATORY GROWN DIAMOND**  
Shape and Cutting Style **KITE STEP CUT**  
Measurements **23.64 X 14.29 X 7.10 MM**

**GRADING RESULTS**

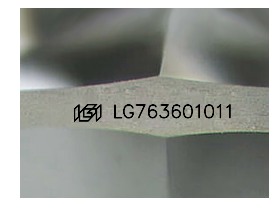
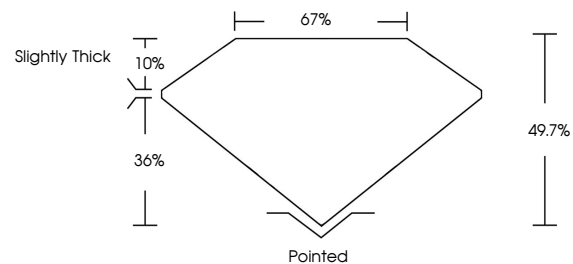
Carat Weight **11.54 CARATS**  
Color Grade **G**  
Clarity Grade **VVS 2**

**ADDITIONAL GRADING INFORMATION**

Polish **EXCELLENT**  
Symmetry **EXCELLENT**  
Fluorescence **NONE**  
Inscription(s) **IGI LG763601011**

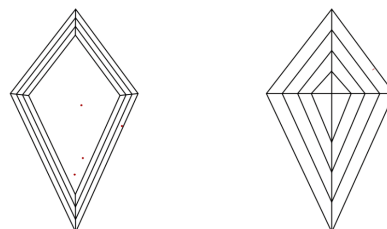
Comments: This Laboratory Grown Diamond was created by Chemical Vapor Deposition (CVD) growth process.  
Type IIa

**PROPORTIONS**



Sample Image Used

**CLARITY CHARACTERISTICS**



**KEY TO SYMBOLS**

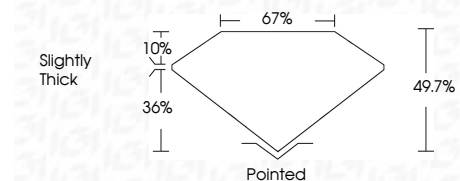
Red symbols indicate internal characteristics.  
Green symbols indicate external characteristics.

**COLOR**

D E F G H I J Faint Very Light Light

**CLARITY**

FL	IF	VVS <sup>1-2</sup>	VS <sup>1-2</sup>	SI <sup>1-2</sup>	I <sup>1-3</sup>
Flawless	Internally Flawless	Very Very Slightly Included	Very Slightly Included	Slightly Included	Included



**ADDITIONAL GRADING INFORMATION**

Polish **EXCELLENT**  
Symmetry **EXCELLENT**  
Fluorescence **NONE**  
Inscription(s) **IGI LG763601011**  
Comments: This Laboratory Grown Diamond was created by Chemical Vapor Deposition (CVD) growth process.  
Type IIa



January 9, 2026  
IGI Report No LG763601011  
KITE STEP CUT  
23.64 X 14.29 X 7.10 MM  
11.54 CARATS  
G  
VVS 2  
49.7%  
67%  
Slightly Thick  
Pointed  
EXCELLENT  
EXCELLENT  
NONE  
IGI LG763601011  
Comments: This Laboratory Grown Diamond was created by Chemical Vapor Deposition (CVD) growth process.  
Type IIa