



ELECTRONIC COPY

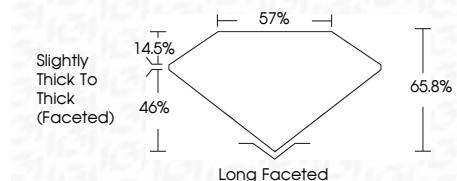
LG762582633
Report verification at igi.org



January 15, 2026
IGI Report Number **LG762582633**
Description **LABORATORY GROWN DIAMOND**
Shape and Cutting Style **CUSHION ANTIQUE BRILLIANT**
Measurements **9.07 X 7.39 X 4.86 MM**

GRADING RESULTS

Carat Weight **2.53 CARATS**
Color Grade **D**
Clarity Grade **VVS 2**



ADDITIONAL GRADING INFORMATION

Polish **EXCELLENT**
Symmetry **EXCELLENT**
Fluorescence **NONE**
Inscription(s) **IGI LG762582633**
Comments: This Laboratory Grown Diamond was created by Chemical Vapor Deposition (CVD) growth process. Type IIa



January 15, 2026
IGI Report No **LG762582633**
CUSHION ANTIQUE BRILLIANT
9.07 X 7.39 X 4.86 MM
2.53 CARATS
D
VVS 2
65.8%
46%
57%
Slightly Thick To Thick (Faceted)
Long Faceted
EXCELLENT
EXCELLENT
NONE
IGI LG762582633
Comments: This Laboratory Grown Diamond was created by Chemical Vapor Deposition (CVD) growth process. Type IIa

LABORATORY GROWN DIAMOND REPORT

January 15, 2026
IGI Report Number **LG762582633**
Description **LABORATORY GROWN DIAMOND**
Shape and Cutting Style **CUSHION ANTIQUE BRILLIANT**
Measurements **9.07 X 7.39 X 4.86 MM**

GRADING RESULTS

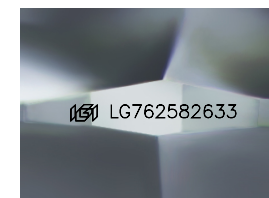
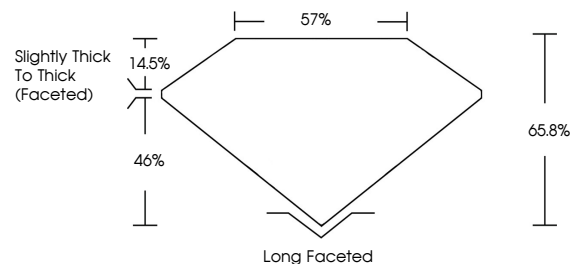
Carat Weight **2.53 CARATS**
Color Grade **D**
Clarity Grade **VVS 2**

ADDITIONAL GRADING INFORMATION

Polish **EXCELLENT**
Symmetry **EXCELLENT**
Fluorescence **NONE**
Inscription(s) **IGI LG762582633**

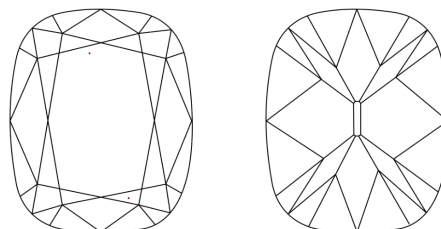
Comments: This Laboratory Grown Diamond was created by Chemical Vapor Deposition (CVD) growth process. Type IIa

PROPORTIONS



Sample Image Used

CLARITY CHARACTERISTICS



KEY TO SYMBOLS

Red symbols indicate internal characteristics.
Green symbols indicate external characteristics.

COLOR

D E F G H I J Faint Very Light Light

CLARITY

FL	IF	VVS ¹⁻²	VS ¹⁻²	SI ¹⁻²	I ¹⁻³
Flawless	Internally Flawless	Very Very Slightly Included	Very Slightly Included	Slightly Included	Included

