



ELECTRONIC COPY

LABORATORY GROWN DIAMOND REPORT

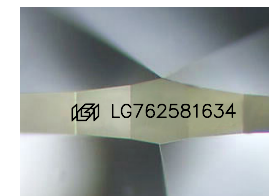
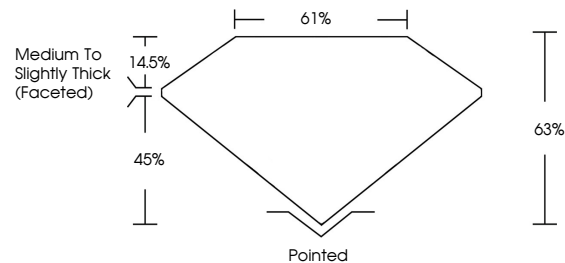
January 5, 2026
IGI Report Number **LG762581634**
Description **LABORATORY GROWN DIAMOND**
Shape and Cutting Style **PEAR BRILLIANT**
Measurements **14.78 X 9.15 X 5.76 MM**
GRADING RESULTS
Carat Weight **4.53 CARATS**
Color Grade **G**
Clarity Grade **VS 1**

ADDITIONAL GRADING INFORMATION

Polish **EXCELLENT**
Symmetry **EXCELLENT**
Fluorescence **NONE**
Inscription(s) **IGI LG762581634**

Comments: This Laboratory Grown Diamond was created by Chemical Vapor Deposition (CVD) growth process.
Type IIa

PROPORTIONS



Sample Image Used

COLOR

D E F G H I J Faint Very Light Light

CLARITY

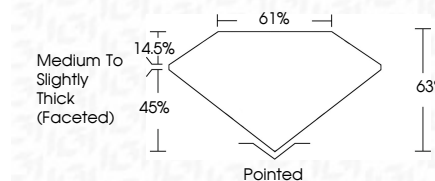
FL	IF	VS ¹⁻²	VS ¹⁻²	SI ¹⁻²	I ¹⁻³
Flawless	Internally Flawless	Very Very Slightly Included	Very Slightly Included	Slightly Included	Included



January 5, 2026
IGI Report Number **LG762581634**
Description **LABORATORY GROWN DIAMOND**
Shape and Cutting Style **PEAR BRILLIANT**
Measurements **14.78 X 9.15 X 5.76 MM**
GRADING RESULTS
Carat Weight **4.53 CARATS**
Color Grade **G**
Clarity Grade **VS 1**

ADDITIONAL GRADING INFORMATION

Polish **EXCELLENT**
Symmetry **EXCELLENT**
Fluorescence **NONE**
Inscription(s) **IGI LG762581634**
Comments: This Laboratory Grown Diamond was created by Chemical Vapor Deposition (CVD) growth process.
Type IIa



IGI



January 5, 2026
IGI Report No LG762581634
PEAR BRILLIANT

14.78 X 9.15 X 5.76 MM

4.53 CARATS

G

VS 1

63%

61%

Medium to Slightly Thick (Faceted)

Pointed

EXCELLENT

EXCELLENT

NONE

IGI LG762581634

Comments: This Laboratory Grown Diamond was created by Chemical Vapor Deposition (CVD) growth process.
Type IIa