



**ELECTRONIC COPY**

## LABORATORY GROWN DIAMOND REPORT

LG762579441  
Report verification at [igi.org](https://igi.org)

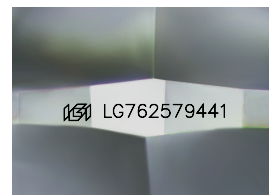
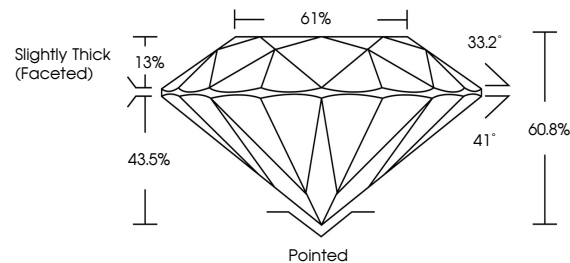
|                         |                          |
|-------------------------|--------------------------|
| January 7, 2026         |                          |
| IGI Report Number       | LG762579441              |
| Description             | LABORATORY GROWN DIAMOND |
| Shape and Cutting Style | ROUND BRILLIANT          |
| Measurements            | 8.05 - 8.10 X 4.91 MM    |
| GRADING RESULTS         |                          |
| Carat Weight            | 2.00 CARATS              |
| Color Grade             | E                        |
| Clarity Grade           | VS 1                     |
| Cut Grade               | EXCELLENT                |

### ADDITIONAL GRADING INFORMATION

|                |   |
|----------------|---|
| Polish         | EXCELLENT   |
| Symmetry       | EXCELLENT   |
| Fluorescence   | NONE  |
| Inscription(s) |  LG762579441 |

Comments: This Laboratory Grown Diamond was created by Chemical Vapor Deposition (CVD) growth process.  
Type IIa

## PROPORTIONS



Sample Image Used

## COLOR

D E F G H I J Faint Very Light Light

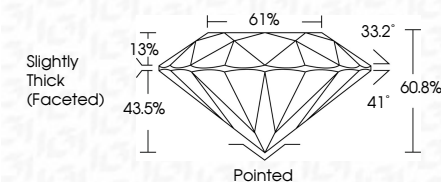
## CLARITY

| FL       | IF                  | VVS <sup>1-2</sup>          | VS <sup>1-2</sup>      | SI <sup>1-2</sup> | I <sup>1-3</sup> |
|----------|---------------------|-----------------------------|------------------------|-------------------|------------------|
| Flawless | Internally Flawless | Very Very Slightly Included | Very Slightly Included | Slightly Included | Included         |

## LABORATORY GROWN DIAMOND REPORT



|                         |                          |
|-------------------------|--------------------------|
| January 7, 2026         |                          |
| IGI Report Number       | LG762579441              |
| Description             | LABORATORY GROWN DIAMOND |
| Shape and Cutting Style | ROUND BRILLIANT          |
| Measurements            | 8.05 - 8.10 X 4.91 MM    |
| GRADING RESULTS         |                          |
| Carat Weight            | 2.00 CARATS              |
| Color Grade             | E                        |
| Clarity Grade           | VS 1                     |
| Cut Grade               | EXCELLENT                |



### ADDITIONAL GRADING INFORMATION

|  |   |
|--|---|
| Polish   | EXCELLENT   |
| Symmetry   | EXCELLENT   |
| Fluorescence   | NONE  |
| Inscription(s)   |  LG762579441 |
| Comments: This Laboratory Grown Diamond was created by Chemical Vapor Deposition (CVD) growth process. |   |
| Type IIa   |   |



IG



© IGI 2020, International Gemological Institute

FD - 10 20



THIS DOCUMENT WAS PRODUCED WITH THE FOLLOWING SECURITY MEASURES: SPECIAL DOCUMENT PAPER, INK SCREENS, WATERMARK, BACKGROUND DESIGNS, HOLOGRAM AND OTHER SECURITY FEATURES NOT LISTED AND DO EXCEED DOCUMENT SECURITY INDUSTRY GUIDELINES

**www.igi.org**

