



**ELECTRONIC COPY**

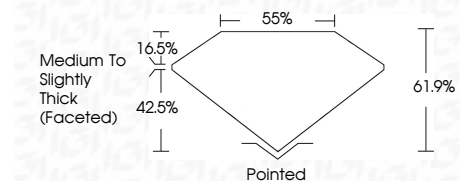
LG762578031  
Report verification at igi.org



January 12, 2026  
IGI Report Number **LG762578031**  
Description **LABORATORY GROWN DIAMOND**  
Shape and Cutting Style **ROUND MODIFIED BRILLIANT**  
Measurements **7.98 - 7.97 X 4.93 MM**

**GRADING RESULTS**

Carat Weight **2.09 CARATS**  
Color Grade **FANCY INTENSE YELLOWISH GREEN**  
Clarity Grade **VVS 2**



**ADDITIONAL GRADING INFORMATION**

Polish **EXCELLENT**  
Symmetry **EXCELLENT**  
Fluorescence **VERY SLIGHT**  
Inscription(s) **IGI LG762578031**  
Comments: This Laboratory Grown Diamond was created by Chemical Vapor Deposition (CVD) growth process. Indications of post-growth treatment.



January 12, 2026  
IGI Report No **LG762578031**  
**ROUND MODIFIED BRILLIANT**  
2.09 CARATS  
Carat Weight  
Color Grade **FANCY INTENSE YELLOWISH GREEN**  
Clarity Grade **VVS 2**  
Depth **61.9%**  
Table **55%**  
Girdle **Medium to Slightly Thick (Faceted)**  
Culet **Pointed**  
Polish **EXCELLENT**  
Symmetry **EXCELLENT**  
Fluorescence **VERY SLIGHT**  
Inscription(s) **IGI LG762578031**  
Comments: This Laboratory Grown Diamond was created by Chemical Vapor Deposition (CVD) growth process. Indications of post-growth treatment.

**LABORATORY GROWN DIAMOND REPORT**

January 12, 2026  
IGI Report Number **LG762578031**  
Description **LABORATORY GROWN DIAMOND**  
Shape and Cutting Style **ROUND MODIFIED BRILLIANT**  
Measurements **7.98 - 7.97 X 4.93 MM**

**GRADING RESULTS**

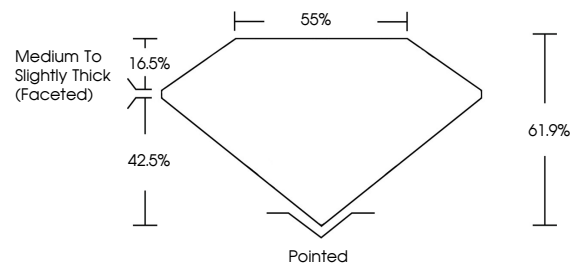
Carat Weight **2.09 CARATS**  
Color Grade **FANCY INTENSE YELLOWISH GREEN**  
Clarity Grade **VVS 2**

**ADDITIONAL GRADING INFORMATION**

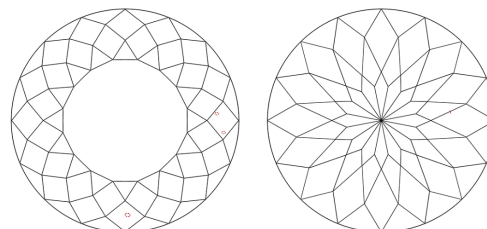
Polish **EXCELLENT**  
Symmetry **EXCELLENT**  
Fluorescence **VERY SLIGHT**  
Inscription(s) **IGI LG762578031**

Comments: This Laboratory Grown Diamond was created by Chemical Vapor Deposition (CVD) growth process. Indications of post-growth treatment.

**PROPORTIONS**

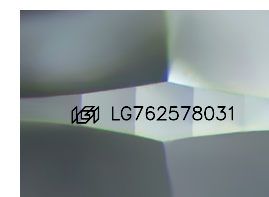


**CLARITY CHARACTERISTICS**



**KEY TO SYMBOLS**

Red symbols indicate internal characteristics.  
Green symbols indicate external characteristics.



Sample Image Used

**COLOR**

D E F G H I J Faint Very Light Light

**CLARITY**

FL	IF	VVS <sup>1-2</sup>	VS <sup>1-2</sup>	SI <sup>1-2</sup>	I <sup>1-3</sup>
Flawless	Internally Flawless	Very Very Slightly Included	Very Slightly Included	Slightly Included	Included