



**INTERNATIONAL
GEMOLOGICAL
INSTITUTE**

ELECTRONIC COPY

LG762576438
Report verification at igi.org

LABORATORY GROWN DIAMOND REPORT



January 2, 2026

IGI Report Number **LG762576438**

Description	LABORATORY GROWN DIAMOND
-------------	--------------------------

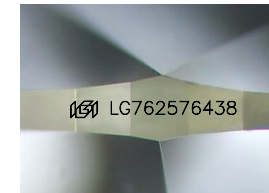
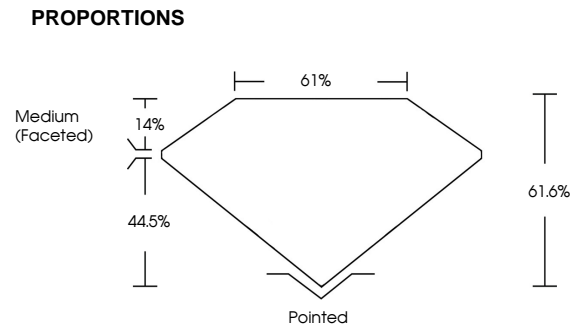
Shape and Cutting Style **OVAL BRILLIANT**

Measurements **8.46 X 5.84 X 3.60 MM**

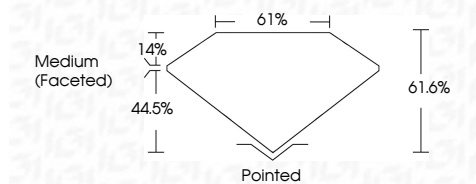
GRADING RESULTS

Carat Weight 1.09 CARAT

Color Grade D

Clarity Grade **VVS 1**

Sample Image Used



ADDITIONAL GRADING INFORMATION

Polish **EXCELLENT**Symmetry **EXCELLENT**Fluorescence **NONE**Inscription(s) LG762576438

Comments: This Laboratory Grown Diamond was created by Chemical Vapor Deposition (CVD) growth process.
Type IIa



© IGI 2020, International Gemological Institute

FD - 10 20

www.igi.org

THIS DOCUMENT WAS PRODUCED WITH THE FOLLOWING SECURITY MEASURES: SPECIAL DOCUMENT PAPER, INK SCREENS, WATERMARK, BACKGROUND DESIGNS, HOLOGRAM AND OTHER SECURITY FEATURES NOT LISTED AND DO EXCEED DOCUMENT SECURITY INDUSTRY GUIDELINE

January 2, 2026
GI Report No LG762576438

January 2, 2020
GI Report No LG762576438
COVAL BRILLIANT

3.46 X 5.84 X 3.60 MM

3.46 X 5.84 X 3.60 MM
Carat Weight 1.09 CARAT

Color Grade

Clarity Grade	WS 1
Depth	61.6%

Table	61%
Girdle	Medicine Chest

Medium (Faceted)

Culet	Pointed
Polish	EXCELLENT

Symmetry

Fluorescence	NONE
Inscription(s)	151 LG762576438

Comments:
This Laboratory Grown Diamond was

created by Chemical Vapor Deposition (CVD) growth process.

type III