



ELECTRONIC COPY

LG762574701
Report verification at igi.org



February 24, 2026

IGI Report Number **LG762574701**

Description **LABORATORY GROWN DIAMOND**

Shape and Cutting Style **ROUND BRILLIANT**

Measurements **11.17 - 11.21 X 6.58 MM**

GRADING RESULTS

Carat Weight **5.00 CARATS**

Color Grade **F**

Clarity Grade **VS 2**

Cut Grade **EXCELLENT**

February 24, 2026

IGI Report Number **LG762574701**

Description **LABORATORY GROWN DIAMOND**

Shape and Cutting Style **ROUND BRILLIANT**

Measurements **11.17 - 11.21 X 6.58 MM**

GRADING RESULTS

Carat Weight **5.00 CARATS**

Color Grade **F**

Clarity Grade **VS 2**

Cut Grade **EXCELLENT**

ADDITIONAL GRADING INFORMATION

Polish **EXCELLENT**

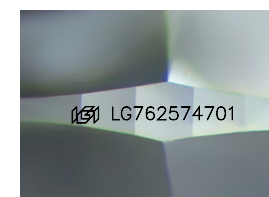
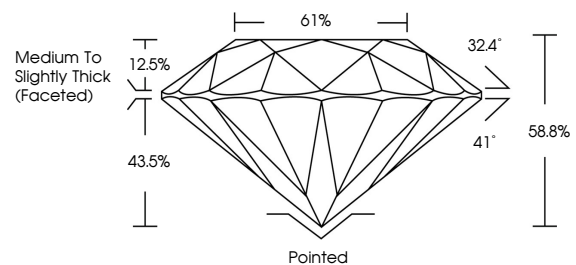
Symmetry **EXCELLENT**

Fluorescence **NONE**

Inscription(s) **IGI LG762574701**

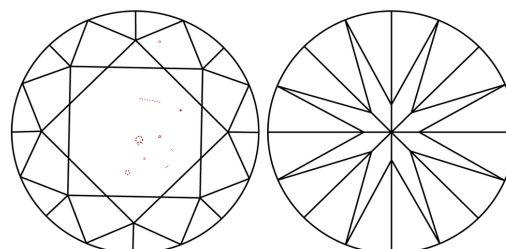
Comments: This Laboratory Grown Diamond was created by Chemical Vapor Deposition (CVD) growth process. Type IIa

PROPORTIONS



Sample Image Used

CLARITY CHARACTERISTICS



KEY TO SYMBOLS

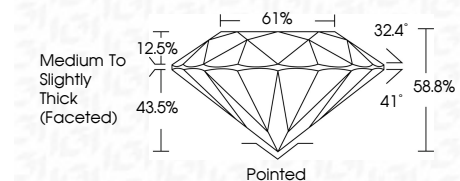
Red symbols indicate internal characteristics.
Green symbols indicate external characteristics.

COLOR

D E F G H I J Faint Very Light Light

CLARITY

FL	IF	VS ¹⁻²	VS ¹⁻²	SI ¹⁻²	I ¹⁻³
Flawless	Internally Flawless	Very Very Slightly Included	Very Slightly Included	Slightly Included	Included



ADDITIONAL GRADING INFORMATION

Polish **EXCELLENT**

Symmetry **EXCELLENT**

Fluorescence **NONE**

Inscription(s) **IGI LG762574701**

Comments: This Laboratory Grown Diamond was created by Chemical Vapor Deposition (CVD) growth process. Type IIa



IGI



February 24, 2026
IGI Report No LG762574701
ROUND BRILLIANT

5.00 CARATS
F

11.17 - 11.21 X 6.58 MM
Color Grade
EXCELLENT

VS 2
Clarity Grade
EXCELLENT

61%
Depth
Medium To Slightly Thick (Faceted)

Pointed
Polish
EXCELLENT

61%
Girdle
EXCELLENT

NONE
Symmetry
EXCELLENT

NONE
Fluorescence
EXCELLENT

IGI LG762574701
Inscription(s)

Comments: This Laboratory Grown Diamond was created by Chemical Vapor Deposition (CVD) growth process. Type IIa