



ELECTRONIC COPY

LG762569496
Report verification at igi.org



January 27, 2026
IGI Report Number LG762569496
Description LABORATORY GROWN DIAMOND
Shape and Cutting Style SQUARE CUSHION MODIFIED BRILLIANT
Measurements 7.49 X 7.26 X 4.94 MM
GRADING RESULTS
Carat Weight 2.52 CARATS
Color Grade FANCY INTENSE YELLOW
Clarity Grade VS 1

LABORATORY GROWN DIAMOND REPORT

January 27, 2026
IGI Report Number LG762569496
Description LABORATORY GROWN DIAMOND
Shape and Cutting Style SQUARE CUSHION MODIFIED BRILLIANT
Measurements 7.49 X 7.26 X 4.94 MM

GRADING RESULTS

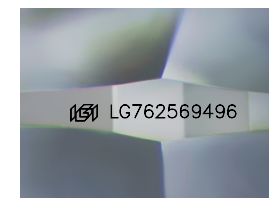
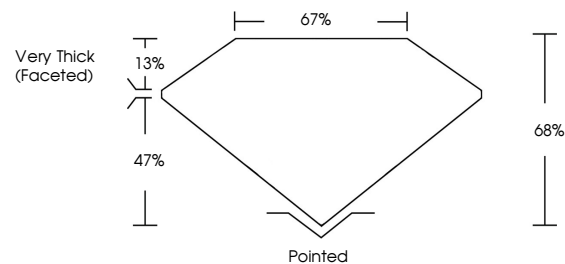
Carat Weight 2.52 CARATS
Color Grade FANCY INTENSE YELLOW
Clarity Grade VS 1

ADDITIONAL GRADING INFORMATION

Polish EXCELLENT
Symmetry EXCELLENT
Fluorescence VERY SLIGHT
Inscription(s) IGI LG762569496

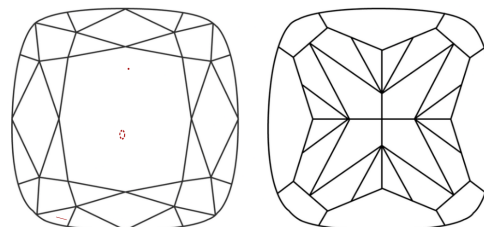
Comments: This Laboratory Grown Diamond was created by Chemical Vapor Deposition (CVD) growth process.

PROPORTIONS



Sample Image Used

CLARITY CHARACTERISTICS



KEY TO SYMBOLS

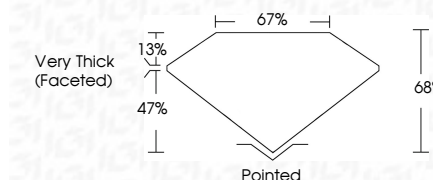
Red symbols indicate internal characteristics.
Green symbols indicate external characteristics.

COLOR

D E F G H I J Faint Very Light Light

CLARITY

FL IF VS 1-2 VS 1-2 SI 1-2 I 1-3
Flawless Internally Flawless Very Very Slightly Included Very Slightly Included Slightly Included Included



ADDITIONAL GRADING INFORMATION

Polish EXCELLENT
Symmetry EXCELLENT
Fluorescence VERY SLIGHT
Inscription(s) IGI LG762569496
Comments: This Laboratory Grown Diamond was created by Chemical Vapor Deposition (CVD) growth process.



January 27, 2026
IGI Report No LG762569496
SQUARE CUSHION MODIFIED BRILLIANT
7.49 X 7.26 X 4.94 MM
2.52 CARATS
FANCY INTENSE YELLOW
VS 1
68%
67%
Very Thick (Faceted)
Pointed
EXCELLENT
EXCELLENT
VERY SLIGHT
IGI LG762569496
Comments: This Laboratory Grown Diamond was created by Chemical Vapor Deposition (CVD) growth process.