



ELECTRONIC COPY

LABORATORY GROWN DIAMOND REPORT

LG762567734
Report verification at igi.org

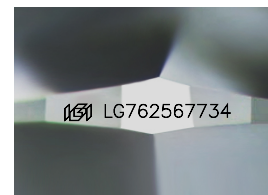
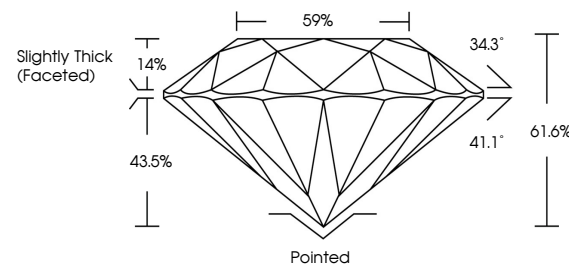
January 23, 2026	
IGI Report Number	LG762567734
Description	LABORATORY GROWN DIAMOND
Shape and Cutting Style	ROUND BRILLIANT
Measurements	8.06 - 8.09 X 4.98 MM
GRADING RESULTS	
Carat Weight	2.01 CARATS
Color Grade	D
Clarity Grade	VVS 2
Cut Grade	IDEAL

ADDITIONAL GRADING INFORMATION

Polish	EXCELLENT
Symmetry	EXCELLENT
Fluorescence	NONE
Inscription(s)	151 LG762567734

Comments: This Laboratory Grown Diamond was created by Chemical Vapor Deposition (CVD) growth process.
Type IIa

PROPORTIONS



Sample Image Used

COLOR

D E F G H I J Faint Very Light Light

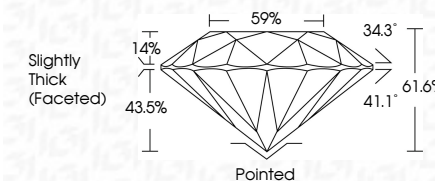
CLARITY

FL	IF	VVS ¹⁻²	VS ¹⁻²	SI ¹⁻²	I ¹⁻³
Flawless	Internally Flawless	Very Very Slightly Included	Very Slightly Included	Slightly Included	Included

LABORATORY GROWN DIAMOND REPORT



January 23, 2026	
IGI Report Number	LG762567734
Description	LABORATORY GROWN DIAMOND
Shape and Cutting Style	ROUND BRILLIANT
Measurements	8.06 - 8.09 X 4.98 MM
GRADING RESULTS	
Carat Weight	2.01 CARATS
Color Grade	D
Clarity Grade	VVS 2
Cut Grade	IDEAL



ADDITIONAL GRADING INFORMATION

Polish	EXCELLENT
Symmetry	EXCELLENT
Fluorescence	NONE
Inscription(s)	
<p>Comments: This Laboratory Grown Diamond was created by Chemical Vapor Deposition (CVD) growth process.</p> <p>Type IIa</p>	



© IGI 2020, International Gemological Institute

FD - 10 20



THIS DOCUMENT WAS PRODUCED WITH THE FOLLOWING SECURITY MEASURES: SPECIAL DOCUMENT PAPER, INK SCREENS, WATERMARK, BACKGROUND DESIGNS, HOLOGRAM AND OTHER SECURITY FEATURES NOT LISTED AND DO EXCEED DOCUMENT SECURITY INDUSTRY GUIDELINES

www.igi.org

January 23, 2026
GI Report No LG762567734
ROUND BRILLIANT

8.06 - 8.09 X 4.98 MM

8.06 - 8.09 X 4.98 MM
2.01 CARATS

Catal Weight %	ZnO Catalysts
Color Grade	D

Clarity Grade	WS2
FL	
IF	
VVS	
VS	
SI	
I	

IDEAL

Depth	61.6%	50%
Table		

Girdle

	Pointed	Excellent
Culet		
Polish		

Excellent	Excellent
Symmetry	Symmetry

Fluorescence	NONE
Fluorescence	

Inscription(s)

Comments:
This Laboratory Grown Diamond was

created by Chemical Vapor Deposition (CVD) growth process

Type IIa