



ELECTRONIC COPY

LG762567397
Report verification at igi.org



January 22, 2026

IGI Report Number **LG762567397**

Description **LABORATORY GROWN DIAMOND**

Shape and Cutting Style **SQUARE EMERALD CUT**

Measurements **6.24 X 6.21 X 4.04 MM**

GRADING RESULTS

Carat Weight **1.54 CARAT**

Color Grade **FANCY VIVID BLUE**

Clarity Grade **VVS 1**

January 22, 2026
IGI Report Number **LG762567397**
Description **LABORATORY GROWN DIAMOND**
Shape and Cutting Style **SQUARE EMERALD CUT**
Measurements **6.24 X 6.21 X 4.04 MM**

GRADING RESULTS

Carat Weight **1.54 CARAT**

Color Grade **FANCY VIVID BLUE**

Clarity Grade **VVS 1**

ADDITIONAL GRADING INFORMATION

Polish **EXCELLENT**

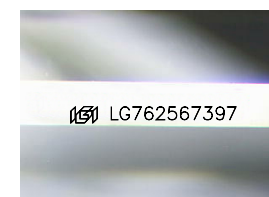
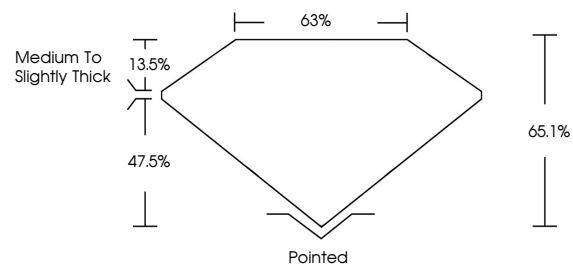
Symmetry **EXCELLENT**

Fluorescence **NONE**

Inscription(s) **IGI LG762567397**

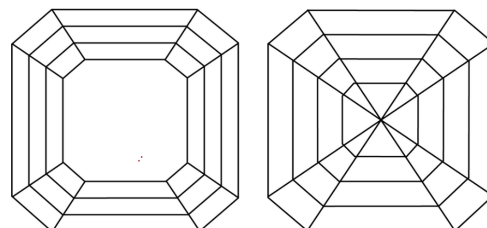
Comments: This Laboratory Grown Diamond was created by High Pressure High Temperature (HPHT) growth process. Indications of post-growth treatment.

PROPORTIONS



Sample Image Used

CLARITY CHARACTERISTICS



KEY TO SYMBOLS

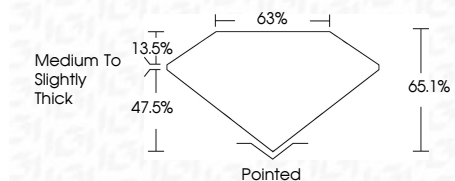
Red symbols indicate internal characteristics.
Green symbols indicate external characteristics.

COLOR

D E F G H I J Faint Very Light Light

CLARITY

FL	IF	VVS ¹⁻²	VS ¹⁻²	SI ¹⁻²	I ¹⁻³
Flawless	Internally Flawless	Very Very Slightly Included	Very Slightly Included	Slightly Included	Included



ADDITIONAL GRADING INFORMATION

Polish **EXCELLENT**

Symmetry **EXCELLENT**

Fluorescence **NONE**

Inscription(s) **IGI LG762567397**

Comments: This Laboratory Grown Diamond was created by High Pressure High Temperature (HPHT) growth process. Indications of post-growth treatment.



IGI



January 22, 2026
IGI Report No LG762567397
SQUARE EMERALD CUT

1.54 CARAT
Carat Weight
FANCY VIVID BLUE
Color Grade

VVS 1
Clarity Grade
65.1%
Depth
63%
Table
Medium to Slightly Thick
Girdle
Pointed
Culet
EXCELLENT
Polish
EXCELLENT
Symmetry
NONE
Fluorescence
IGI LG762567397
Inscription(s)

Comments: This Laboratory Grown Diamond was created by High Pressure High Temperature (HPHT) growth process. Indications of post-growth treatment.