



ELECTRONIC COPY

LG762566676
Report verification at igi.org



January 22, 2026

IGI Report Number **LG762566676**

Description **LABORATORY GROWN DIAMOND**

Shape and Cutting Style **ROUND BRILLIANT**

Measurements **8.50 - 8.54 X 5.28 MM**

GRADING RESULTS

Carat Weight **2.34 CARATS**

Color Grade **H**

Clarity Grade **VS 1**

Cut Grade **EXCELLENT**

January 22, 2026
IGI Report Number **LG762566676**
Description **LABORATORY GROWN DIAMOND**
Shape and Cutting Style **ROUND BRILLIANT**
Measurements **8.50 - 8.54 X 5.28 MM**

GRADING RESULTS

Carat Weight **2.34 CARATS**

Color Grade **H**

Clarity Grade **VS 1**

Cut Grade **EXCELLENT**

ADDITIONAL GRADING INFORMATION

Polish **EXCELLENT**

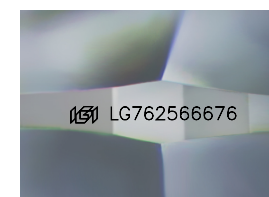
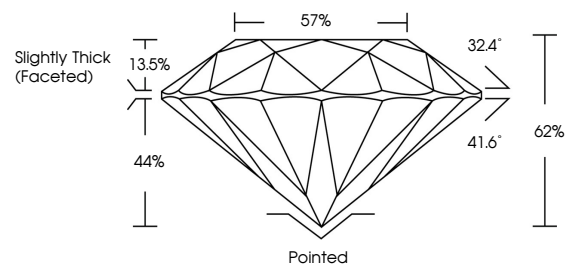
Symmetry **EXCELLENT**

Fluorescence **NONE**

Inscription(s) **IGI LG762566676**

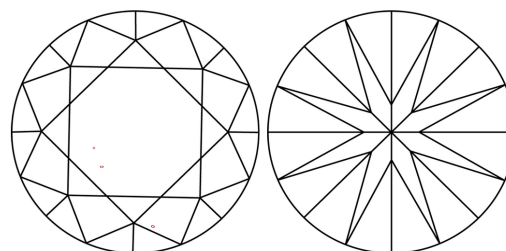
Comments: This Laboratory Grown Diamond was created by Chemical Vapor Deposition (CVD) growth process.
Type IIa

PROPORTIONS



Sample Image Used

CLARITY CHARACTERISTICS



KEY TO SYMBOLS

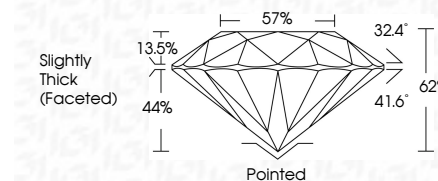
Red symbols indicate internal characteristics.
Green symbols indicate external characteristics.

COLOR

D E F G H I J Faint Very Light Light

CLARITY

FL	IF	VS ¹⁻²	VS ¹⁻²	SI ¹⁻²	I ¹⁻³
Flawless	Internally Flawless	Very Very Slightly Included	Very Slightly Included	Slightly Included	Included



ADDITIONAL GRADING INFORMATION

Polish **EXCELLENT**

Symmetry **EXCELLENT**

Fluorescence **NONE**

Inscription(s) **IGI LG762566676**

Comments: This Laboratory Grown Diamond was created by Chemical Vapor Deposition (CVD) growth process.
Type IIa



January 22, 2026
IGI Report No LG762566676
ROUND BRILLIANT
8.50 - 8.54 X 5.28 MM
2.34 CARATS
H
VS 1
EXCELLENT
62%
57%
Slightly Thick (Faceted)

Culet
Pointed
Polish
EXCELLENT
Symmetry
EXCELLENT
Fluorescence
NONE
Inscription(s)
IGI LG762566676

Comments: This Laboratory Grown Diamond was created by Chemical Vapor Deposition (CVD) growth process.
Type IIa