



ELECTRONIC COPY

LG762565104
Report verification at igi.org



January 21, 2026
IGI Report Number **LG762565104**
Description **LABORATORY GROWN DIAMOND**
Shape and Cutting Style **EMERALD CUT**
Measurements **7.98 X 5.62 X 3.80 MM**
GRADING RESULTS
Carat Weight **1.68 CARAT**
Color Grade **FANCY INTENSE GREEN**
Clarity Grade **VS 1**

LABORATORY GROWN DIAMOND REPORT

January 21, 2026
IGI Report Number **LG762565104**
Description **LABORATORY GROWN DIAMOND**
Shape and Cutting Style **EMERALD CUT**
Measurements **7.98 X 5.62 X 3.80 MM**

GRADING RESULTS

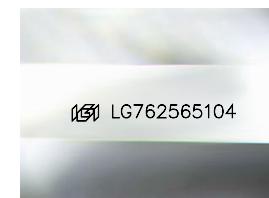
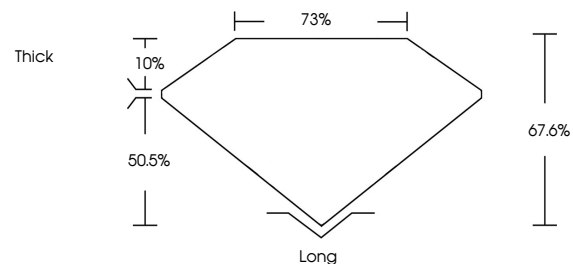
Carat Weight **1.68 CARAT**
Color Grade **FANCY INTENSE GREEN**
Clarity Grade **VS 1**

ADDITIONAL GRADING INFORMATION

Polish **VERY GOOD**
Symmetry **VERY GOOD**
Fluorescence **VERY SLIGHT**
Inscription(s) **IGI LG762565104**

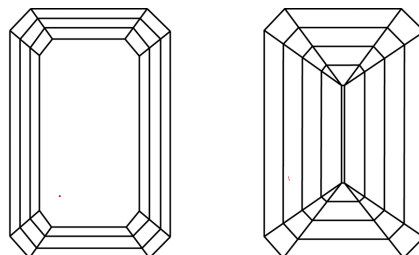
Comments: This Laboratory Grown Diamond was created by Chemical Vapor Deposition (CVD) growth process.
Indications of post-growth treatment.

PROPORTIONS



Sample Image Used

CLARITY CHARACTERISTICS



KEY TO SYMBOLS

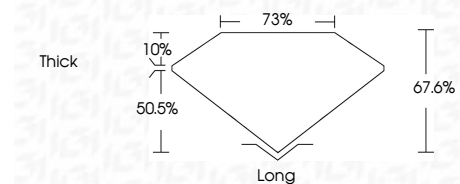
Red symbols indicate internal characteristics.
Green symbols indicate external characteristics.

COLOR

D E F G H I J Faint Very Light Light

CLARITY

FL	IF	VS ¹⁻²	VS ¹⁻²	SI ¹⁻²	I ¹⁻³
Flawless	Internally Flawless	Very Very Slightly Included	Very Slightly Included	Slightly Included	Included



ADDITIONAL GRADING INFORMATION

Polish **VERY GOOD**
Symmetry **VERY GOOD**
Fluorescence **VERY SLIGHT**
Inscription(s) **IGI LG762565104**
Comments: This Laboratory Grown Diamond was created by Chemical Vapor Deposition (CVD) growth process.
Indications of post-growth treatment.



January 21, 2026
IGI Report No **LG762565104**
EMERALD CUT
1.68 CARAT
Carat Weight **FANCY INTENSE GREEN**
Color Grade **VS 1**
Depth **67.6%**
Table **75%**
Girdle **Thick**
Culet **Long**
Polish **VERY GOOD**
Symmetry **VERY GOOD**
Fluorescence **VERY SLIGHT**
Inscription(s) **IGI LG762565104**
Comments: This Laboratory Grown Diamond was created by Chemical Vapor Deposition (CVD) growth process.
Indications of post-growth treatment.