

INTERNATIONAL
GEMOLOGICAL
INSTITUTE

ELECTRONIC COPY

LABORATORY GROWN DIAMOND REPORT

January 3, 2026

IGI Report Number

LG762559090

Description

LABORATORY GROWN DIAMOND

Shape and Cutting Style

FLOWER MODIFIED BRILLIANT

Measurements

7.91 X 7.79 X 5.63 MM

GRADING RESULTS

Carat Weight

2.83 CARATS

Color Grade

F

Clarity Grade

VVS 2

ADDITIONAL GRADING INFORMATION

Polish

EXCELLENT


Symmetry

EXCELLENT

Fluorescence

NONE

Inscription(s)

 LG762559090

Comments: This Laboratory Grown Diamond was created by Chemical Vapor Deposition (CVD) growth process. Type IIa

LABORATORY GROWN DIAMOND REPORT

January 3, 2026

IGI Report Number

LG762559090

Description

LABORATORY GROWN DIAMOND

Shape and Cutting Style

FLOWER MODIFIED BRILLIANT

Measurements

7.91 X 7.79 X 5.63 MM

GRADING RESULTS

Carat Weight

2.83 CARATS

Color Grade

F

Clarity Grade

VVS 2

ADDITIONAL GRADING INFORMATION

Polish

EXCELLENT

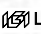
Symmetry

EXCELLENT

Fluorescence

NONE

Inscription(s)

 LG762559090

Comments: This Laboratory Grown Diamond was created by Chemical Vapor Deposition (CVD) growth process. Type IIa

LABORATORY GROWN DIAMOND REPORT

January 3, 2026

IGI Report No LG762559090

FLOWER MODIFIED BRILLIANT

7.91 X 7.79 X 5.63 MM

Carat Weight

2.83 CARATS

Color Grade

F

Clarity Grade

VVS 2

Depth

72.3%

Table

71%

Girdle

Medium to Slightly Thick

Culet

Pointed

Polish

EXCELLENT

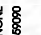
Symmetry

EXCELLENT

Fluorescence

NONE

Inscription(s)

 LG762559090

Comments: The Laboratory Grown Diamond was created by Chemical Vapor Deposition (CVD) growth process. Type IIa

LABORATORY GROWN DIAMOND REPORT

January 3, 2026

IGI Report No LG762559090

FLOWER MODIFIED BRILLIANT

7.91 X 7.79 X 5.63 MM

Carat Weight

2.83 CARATS

Color Grade

F

Clarity Grade

VVS 2

Depth

72.3%

Table

71%

Girdle

Medium to Slightly Thick

Culet

Pointed

Polish

EXCELLENT

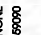
Symmetry

EXCELLENT

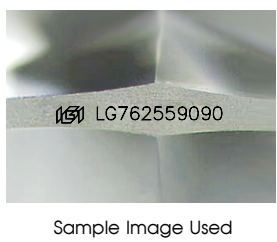
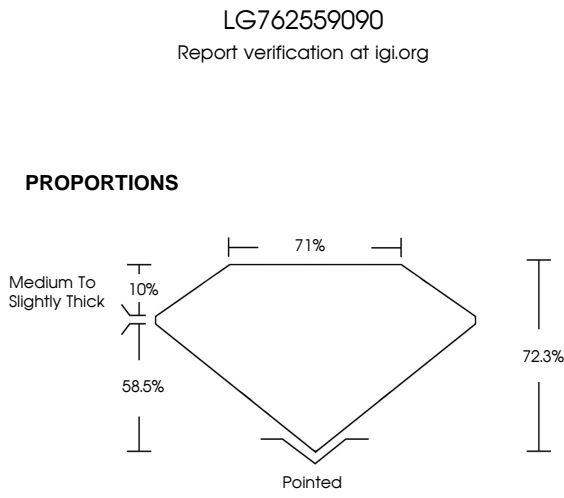
Fluorescence

NONE

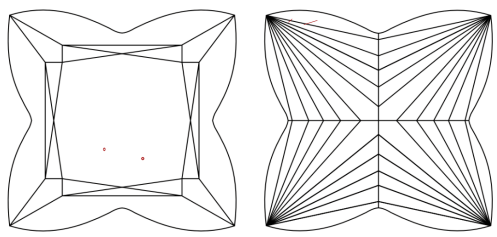
Inscription(s)

 LG762559090

Comments: The Laboratory Grown Diamond was created by Chemical Vapor Deposition (CVD) growth process. Type IIa



CLARITY CHARACTERISTICS



KEY TO SYMBOLS

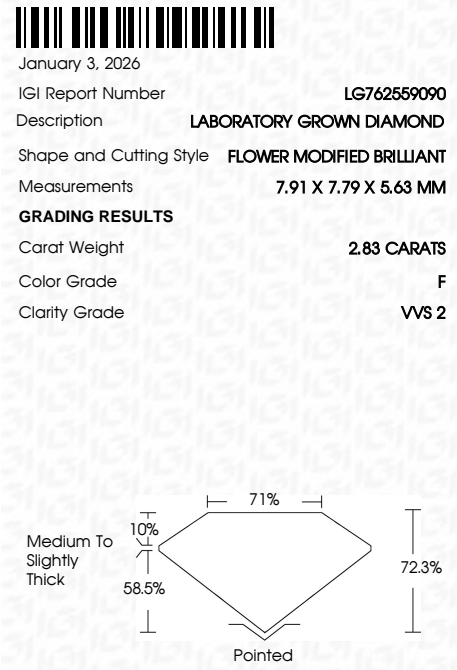
Red symbols indicate internal characteristics.
Green symbols indicate external characteristics.

COLOR

D	E	F	G	H	I	J	K	L	M	N	O	P	Q	R	S	T	U	V	W	X	Y	Z

CLARITY

FL	IF	VVS ¹⁻²	VS ¹⁻²	SI ¹⁻²	I ¹⁻³
Flawless	Internally Flawless	Very Very Slightly Included	Very Slightly Included	Slightly Included	Included



ADDITIONAL GRADING INFORMATION

Polish	EXCELLENT
Symmetry	EXCELLENT
Fluorescence	NONE
Inscription(s)	 LG762559090
Comments:	This Laboratory Grown Diamond was created by Chemical Vapor Deposition (CVD) growth process. Type IIa

