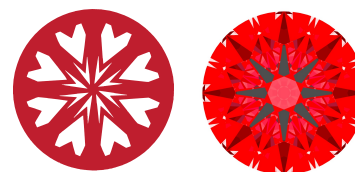
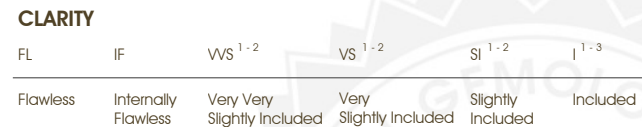




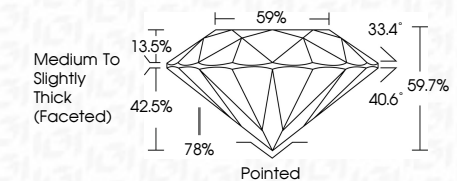
Light Performance Grade: Exceptional



Structured Light Environment Representation



January 12, 2026  
IGI Report Number: LG762558484  
Description: LABORATORY GROWN DIAMOND  
Shape and Cutting Style: ROUND BRILLIANT  
Measurements: 17.62 - 17.71 X 10.54 MM  
GRADING RESULTS  
Carat Weight: 20.09 CARATS  
Color Grade: E  
Clarity Grade: VVS 2  
Cut Grade: IDEAL



ADDITIONAL GRADING INFORMATION  
Polish: EXCELLENT  
Symmetry: EXCELLENT  
Fluorescence: NONE  
Inscription(s): IGI LG762558484  
Comments: HEARTS & ARROWS  
This Laboratory Grown Diamond was created by Chemical Vapor Deposition (CVD) growth process. Type IIa

ELECTRONIC COPY  
LABORATORY GROWN DIAMOND REPORT

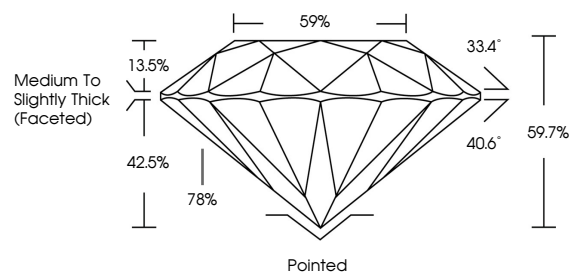
January 12, 2026  
IGI Report Number: LG762558484  
Description: LABORATORY GROWN DIAMOND  
Shape and Cutting Style: ROUND BRILLIANT  
Measurements: 17.62 - 17.71 x 10.54 mm

GRADING RESULTS  
Carat Weight: 20.09 CARATS  
Color Grade: E  
Clarity Grade: VVS 2  
Cut Grade: IDEAL

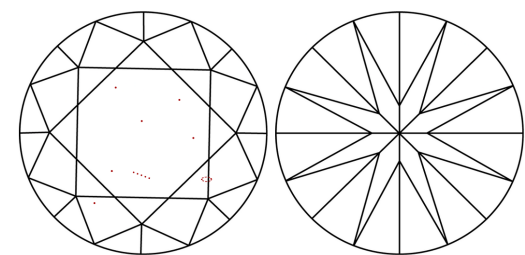
ADDITIONAL GRADING INFORMATION  
Polish: EXCELLENT  
Symmetry: EXCELLENT  
Fluorescence: NONE  
Inscription(s): IGI LG762558484

Comments: HEARTS & ARROWS  
This Laboratory Grown Diamond was created by Chemical Vapor Deposition (CVD) growth process. Type IIa

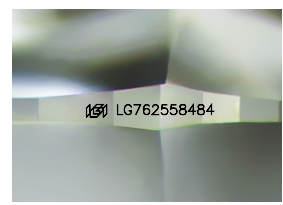
PROPORTIONS



CLARITY CHARACTERISTICS



KEY TO SYMBOLS  
Red symbols indicate internal characteristics.  
Green symbols indicate external characteristics.



Sample Image Used



January 12, 2026  
IGI Report No LG762558484  
ROUND BRILLIANT  
17.62 - 17.71 X 10.54 MM  
20.09 CARATS  
E  
VVS 2  
IDEAL  
59.7%  
59%  
Medium To Slightly Thick (Faceted)  
Pointed  
EXCELLENT  
EXCELLENT  
NONE  
IGI LG762558484  
Comments: HEARTS & ARROWS  
This Laboratory Grown Diamond was created by Chemical Vapor Deposition (CVD) growth process. Type IIa