

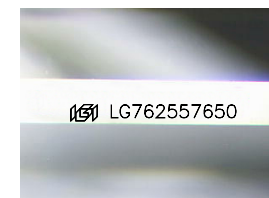


ELECTRONIC COPY

LG762557650
Report verification at igi.org

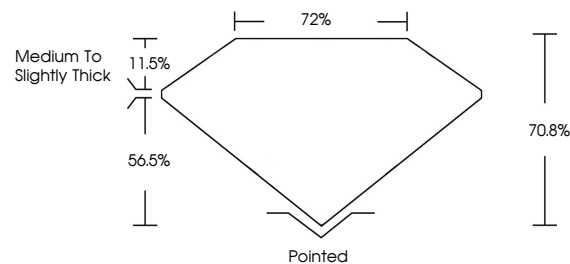


January 2, 2026
IGI Report Number **LG762557650**
Description **LABORATORY GROWN DIAMOND**
Shape and Cutting Style **PRINCESS CUT**
Measurements **5.94 X 5.93 X 4.20 MM**
GRADING RESULTS
Carat Weight **1.27 CARAT**
Color Grade **E**
Clarity Grade **VVS 2**

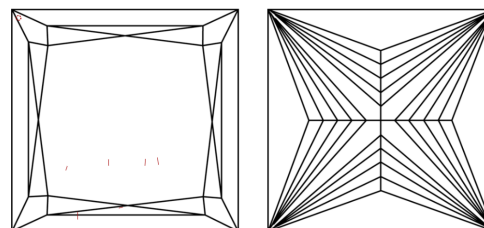


Sample Image Used

PROPORTIONS



CLARITY CHARACTERISTICS



KEY TO SYMBOLS

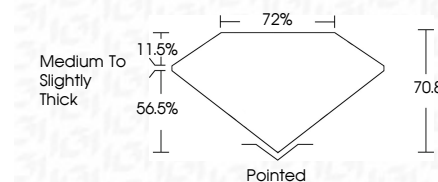
Red symbols indicate internal characteristics.
Green symbols indicate external characteristics.

COLOR

D E F G H I J Faint Very Light Light

CLARITY

FL	IF	VVS ¹⁻²	VS ¹⁻²	SI ¹⁻²	I ¹⁻³
Flawless	Internally Flawless	Very Very Slightly Included	Very Slightly Included	Slightly Included	Included



ADDITIONAL GRADING INFORMATION

Polish **EXCELLENT**
Symmetry **EXCELLENT**
Fluorescence **NONE**
Inscription(s) **IGI LG762557650**
Comments: As Grown - No indication of post-growth treatment.
This Laboratory Grown Diamond was created by High Pressure High Temperature (HPHT) growth process.
Type II



IGI



January 2, 2026
IGI Report No LG762557650
PRINCESS CUT
5.94 X 5.93 X 4.20 MM
1.27 CARAT
E
VVS 2
70.8%
72%
Medium to Slightly Thick
Pointed
EXCELLENT
EXCELLENT
NONE
IGI LG762557650
Comments: As Grown - No indication of post-growth treatment.
This Laboratory Grown Diamond was created by High Pressure High Temperature (HPHT) growth process.
Type II