



**ELECTRONIC COPY**

LG762556168  
Report verification at igi.org



January 18, 2026

IGI Report Number **LG762556168**

Description **LABORATORY GROWN DIAMOND**

Shape and Cutting Style **ROUND BRILLIANT**

Measurements **11.09 - 11.14 X 6.68 MM**

**GRADING RESULTS**

Carat Weight **5.10 CARATS**

Color Grade **F**

Clarity Grade **VVS 2**

Cut Grade **IDEAL**

January 18, 2026

IGI Report Number **LG762556168**

Description **LABORATORY GROWN DIAMOND**

Shape and Cutting Style **ROUND BRILLIANT**

Measurements **11.09 - 11.14 X 6.68 MM**

**GRADING RESULTS**

Carat Weight **5.10 CARATS**

Color Grade **F**

Clarity Grade **VVS 2**

Cut Grade **IDEAL**

**ADDITIONAL GRADING INFORMATION**

Polish **EXCELLENT**

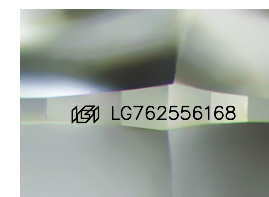
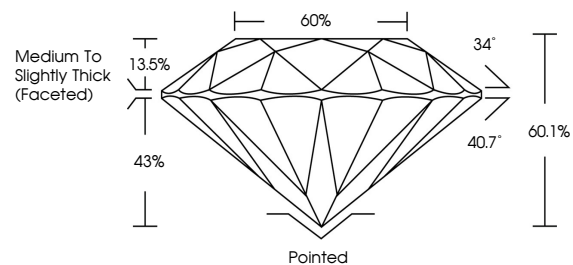
Symmetry **EXCELLENT**

Fluorescence **NONE**

Inscription(s) **LG762556168**

Comments: This Laboratory Grown Diamond was created by Chemical Vapor Deposition (CVD) growth process. Type IIa

**PROPORTIONS**



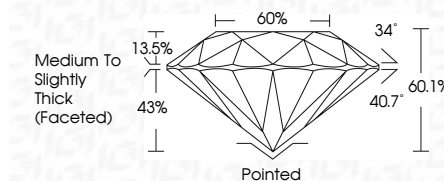
Sample Image Used

**COLOR**

D E F G H I J Faint Very Light Light

**CLARITY**

FL	IF	VS <sup>1-2</sup>	VS <sup>1-2</sup>	SI <sup>1-2</sup>	I <sup>1-3</sup>
Flawless	Internally Flawless	Very Very Slightly Included	Very Slightly Included	Slightly Included	Included



**ADDITIONAL GRADING INFORMATION**

Polish **EXCELLENT**

Symmetry **EXCELLENT**

Fluorescence **NONE**

Inscription(s) **LG762556168**

Comments: This Laboratory Grown Diamond was created by Chemical Vapor Deposition (CVD) growth process. Type IIa



**IGI**



January 18, 2026  
IGI Report No LG762556168  
ROUND BRILLIANT

5.10 CARATS  
F

11.09 - 11.14 X 6.68 MM  
VVS 2  
IDEAL  
60.1%  
60%

Medium To Slightly Thick (Faceted)  
Pointed  
EXCELLENT  
EXCELLENT  
NONE  
NONE

IGI LG762556168

Comments: This Laboratory Grown Diamond was created by Chemical Vapor Deposition (CVD) growth process. Type IIa