



**ELECTRONIC COPY**

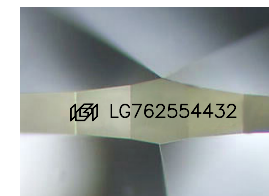
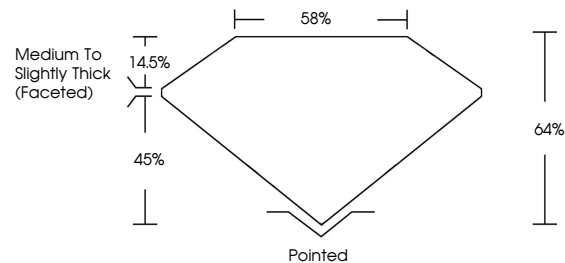
LG762554432  
Report verification at igi.org



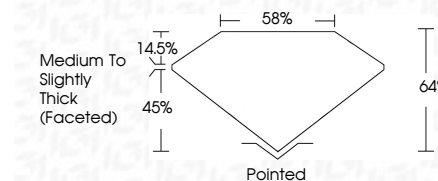
January 2, 2026  
IGI Report Number **LG762554432**  
Description **LABORATORY GROWN DIAMOND**  
Shape and Cutting Style **OVAL BRILLIANT**  
Measurements **8.12 X 5.69 X 3.64 MM**  
**GRADING RESULTS**  
Carat Weight **1.05 CARAT**  
Color Grade **D**  
Clarity Grade **VS 2**

January 2, 2026  
IGI Report Number **LG762554432**  
Description **LABORATORY GROWN DIAMOND**  
Shape and Cutting Style **OVAL BRILLIANT**  
Measurements **8.12 X 5.69 X 3.64 MM**  
**GRADING RESULTS**  
Carat Weight **1.05 CARAT**  
Color Grade **D**  
Clarity Grade **VS 2**

**PROPORTIONS**



Sample Image Used



**ADDITIONAL GRADING INFORMATION**

Polish **EXCELLENT**  
Symmetry **EXCELLENT**  
Fluorescence **NONE**  
Inscription(s) **IGI LG762554432**

Comments: This Laboratory Grown Diamond was created by Chemical Vapor Deposition (CVD) growth process. Type IIa

**ADDITIONAL GRADING INFORMATION**

Polish **EXCELLENT**  
Symmetry **EXCELLENT**  
Fluorescence **NONE**  
Inscription(s) **IGI LG762554432**  
Comments: This Laboratory Grown Diamond was created by Chemical Vapor Deposition (CVD) growth process. Type IIa

**COLOR**

D E F G H I J Faint Very Light Light

**CLARITY**

FL	IF	VS <sup>1-2</sup>	VS <sup>1-2</sup>	SI <sup>1-2</sup>	I <sup>1-3</sup>
Flawless	Internally Flawless	Very Very Slightly Included	Very Slightly Included	Slightly Included	Included



**IGI**



January 2, 2026  
IGI Report No **LG762554432**  
**OVAL BRILLIANT**  
Carat Weight **1.05 CARAT**  
Color Grade **D**  
Clarity Grade **VS 2**  
Table **64%**  
Depth **58%**  
Girdle **Medium to Slightly Thick (Faceted)**  
Culet **Pointed**  
Polish **EXCELLENT**  
Symmetry **EXCELLENT**  
Fluorescence **NONE**  
Inscription(s) **IGI LG762554432**  
Comments: This Laboratory Grown Diamond was created by Chemical Vapor Deposition (CVD) growth process. Type IIa