



**ELECTRONIC COPY**

## LABORATORY GROWN DIAMOND REPORT

LG762548220  
Report verification at [igi.org](https://igi.org)

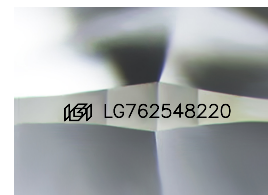
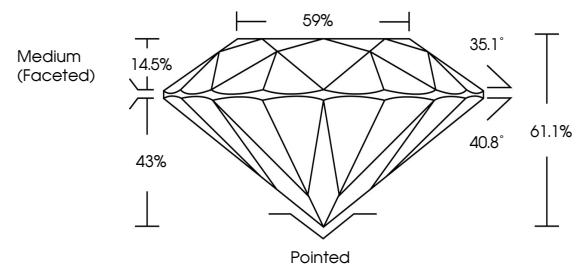
January 6, 2026	
IGI Report Number	LG762548220
Description	LABORATORY GROWN DIAMOND
Shape and Cutting Style	ROUND BRILLIANT
Measurements	9.33 - 9.38 X 5.71 MM
GRADING RESULTS	
Carat Weight	3.09 CARATS
Color Grade	E
Clarity Grade	VVS 2
Cut Grade	IDEAL

### ADDITIONAL GRADING INFORMATION

Polish	EXCELLENT
Symmetry	EXCELLENT
Fluorescence	NONE
Inscription(s)	151 LG762548220

Comments: This Laboratory Grown Diamond was created by Chemical Vapor Deposition (CVD) growth process.  
Type IIa

## PROPORTIONS



Sample Image Used

## COLOR

D E F G H I J Faint Very Light Light

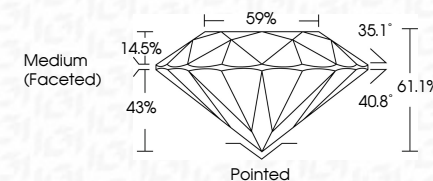
## CLARITY

FL	IF	VVS <sup>1-2</sup>	VS <sup>1-2</sup>	SI <sup>1-2</sup>	I <sup>1-3</sup>
Flawless	Internally Flawless	Very Very Slightly Included	Very Slightly Included	Slightly Included	Included

## LABORATORY GROWN DIAMOND REPORT



January 6, 2026	
IGI Report Number	LG762548220
Description	LABORATORY GROWN DIAMOND
Shape and Cutting Style	ROUND BRILLIANT
Measurements	9.33 - 9.38 X 5.71 MM
GRADING RESULTS	
Carat Weight	3.09 CARATS
Color Grade	E
Clarity Grade	VVS 2
Cut Grade	IDEAL



### ADDITIONAL GRADING INFORMATION

Polish	EXCELLENT
Symmetry	EXCELLENT
Fluorescence	NONE
Inscription(s)	(G) LG762548220

Comments: This Laboratory Grown Diamond was created by Chemical Vapor Deposition (CVD) growth process.

Type IIa



© IGI 2020, International Gemological Institute

FD - 10 20



THIS DOCUMENT WAS PRODUCED WITH THE FOLLOWING SECURITY MEASURES: SPECIAL DOCUMENT PAPER, INK SCREENS, WATERMARK, BACKGROUND DESIGNS, HOLOGRAM AND OTHER SECURITY FEATURES NOT LISTED AND DO EXCEED DOCUMENT SECURITY INDUSTRY GUIDELINE

**www.igi.org**

January 6, 2026  
GI Report No LG762548220

GL Report No LG76

## INVITING DISCUSSION

9.33 - 9.38 X 5.71 MM  
Carat Weight  
3.00 CARATS

**E**  
Color Grade

Clarity Grade	WS 2
I	
II	
III	
IV	
V	
VI	
VII	
VIII	
IX	
X	
XI	
XII	
XIII	
XIV	
XV	
XVI	
XVII	
XVIII	
XIX	
XX	
XXI	
XXII	
XXIII	
XXIV	
XXV	
XXVI	
XXVII	
XXVIII	
XXIX	
XXX	
XXXI	
XXXII	
XXXIII	
XXXIV	
XXXV	
XXXVI	
XXXVII	
XXXVIII	
XXXIX	
XXXX	
XXXXI	
XXXXII	
XXXXIII	
XXXXIV	
XXXXV	
XXXXVI	
XXXXVII	
XXXXVIII	
XXXXIX	
XXXXX	
XXXXXI	
XXXXXII	
XXXXXIII	
XXXXXIV	
XXXXXV	
XXXXXVI	
XXXXXVII	
XXXXXVIII	
XXXXXIX	
XXXXXX	
XXXXXXI	
XXXXXXII	
XXXXXXIII	
XXXXXXIV	
XXXXXXV	
XXXXXXVI	
XXXXXXVII	
XXXXXXVIII	
XXXXXXIX	
XXXXXXX	
XXXXXXXI	
XXXXXXXII	
XXXXXXXIII	
XXXXXXXIV	
XXXXXXXV	
XXXXXXXVI	
XXXXXXXVII	
XXXXXXXVIII	
XXXXXXXIX	
XXXXXXX	
XXXXXXXI	
XXXXXXXII	
XXXXXXXIII	
XXXXXXXIV	
XXXXXXXV	
XXXXXXXVI	
XXXXXXXVII	
XXXXXXXVIII	
XXXXXXXIX	
XXXXXXX	
XXXXXXXI	
XXXXXXXII	
XXXXXXXIII	
XXXXXXXIV	
XXXXXXXV	
XXXXXXXVI	
XXXXXXXVII	
XXXXXXXVIII	
XXXXXXXIX	
XXXXXXX	
XXXXXXXI	
XXXXXXXII	
XXXXXXXIII	
XXXXXXXIV	
XXXXXXXV	
XXXXXXXVI	
XXXXXXXVII	
XXXXXXXVIII	
XXXXXXXIX	
XXXXXXX	
XXXXXXXI	
XXXXXXXII	
XXXXXXXIII	
XXXXXXXIV	
XXXXXXXV	
XXXXXXXVI	
XXXXXXXVII	
XXXXXXXVIII	
XXXXXXXIX	
XXXXXXX	
XXXXXXXI	
XXXXXXXII	
XXXXXXXIII	
XXXXXXXIV	
XXXXXXXV	
XXXXXXXVI	
XXXXXXXVII	
XXXXXXXVIII	
XXXXXXXIX	
XXXXXXX	
XXXXXXXI	
XXXXXXXII	
XXXXXXXIII	
XXXXXXXIV	
XXXXXXXV	
XXXXXXXVI	
XXXXXXXVII	
XXXXXXXVIII	
XXXXXXXIX	
XXXXXXX	
XXXXXXXI	
XXXXXXXII	
XXXXXXXIII	
XXXXXXXIV	
XXXXXXXV	
XXXXXXXVI	
XXXXXXXVII	
XXXXXXXVIII	
XXXXXXXIX	
XXXXXXX	
XXXXXXXI	
XXXXXXXII	
XXXXXXXIII	
XXXXXXXIV	
XXXXXXXV	
XXXXXXXVI	
XXXXXXXVII	
XXXXXXXVIII	
XXXXXXXIX	
XXXXXXX	
XXXXXXXI	
XXXXXXXII	
XXXXXXXIII	
XXXXXXXIV	
XXXXXXXV	
XXXXXXXVI	
XXXXXXXVII	
XXXXXXXVIII	
XXXXXXXIX	
XXXXXXX	
XXXXXXXI	
XXXXXXXII	
XXXXXXXIII	
XXXXXXXIV	
XXXXXXXV	
XXXXXXXVI	
XXXXXXXVII	
XXXXXXXVIII	
XXXXXXXIX	
XXXXXXX	
XXXXXXXI	
XXXXXXXII	
XXXXXXXIII	
XXXXXXXIV	
XXXXXXXV	
XXXXXXXVI	
XXXXXXXVII	
XXXXXXXVIII	
XXXXXXXIX	
XXXXXXX	
XXXXXXXI	
XXXXXXXII	
XXXXXXXIII	
XXXXXXXIV	
XXXXXXXV	
XXXXXXXVI	
XXXXXXXVII	
XXXXXXXVIII	
XXXXXXXIX	
XXXXXXX	
XXXXXXXI	
XXXXXXXII	
XXXXXXXIII	
XXXXXXXIV	
XXXXXXXV	
XXXXXXXVI	
XXXXXXXVII	
XXXXXXXVIII	
XXXXXXXIX	
XXXXXXX	
XXXXXXXI	
XXXXXXXII	
XXXXXXXIII	
XXXXXXXIV	
XXXXXXXV	
XXXXXXXVI	
XXXXXXXVII	
XXXXXXXVIII	
XXXXXXXIX	
XXXXXXX	
XXXXXXXI	
XXXXXXXII	
XXXXXXXIII	
XXXXXXXIV	
XXXXXXXV	
XXXXXXXVI	
XXXXXXXVII	
XXXXXXXVIII	
XXXXXXXIX	
XXXXXXX	
XXXXXXXI	
XXXXXXXII	
XXXXXXXIII	
XXXXXXXIV	
XXXXXXXV	
XXXXXXXVI	
XXXXXXXVII	
XXXXXXXVIII	
XXXXXXXIX	
XXXXXXX	
XXXXXXXI	
XXXXXXXII	
XXXXXXXIII	
XXXXXXXIV	

Color	Clarity	Cut Grade	IDEAL
Colorless	VVS	EX	100%
Colorless	VS	EX	99%
Colorless	VS	VVS	98%
Colorless	VS	VS	97%
Colorless	VS	SI	96%
Colorless	SI	EX	95%
Colorless	SI	VVS	94%
Colorless	SI	VS	93%
Colorless	SI	SI	92%
Faint Yellow	SI	EX	91%
Faint Yellow	SI	VVS	90%
Faint Yellow	SI	VS	89%
Faint Yellow	SI	SI	88%
Light Yellow	SI	EX	87%
Light Yellow	SI	VVS	86%
Light Yellow	SI	VS	85%
Light Yellow	SI	SI	84%
Medium Yellow	SI	EX	83%
Medium Yellow	SI	VVS	82%
Medium Yellow	SI	VS	81%
Medium Yellow	SI	SI	80%
Dark Yellow	SI	EX	79%
Dark Yellow	SI	VVS	78%
Dark Yellow	SI	VS	77%
Dark Yellow	SI	SI	76%
Brown	SI	EX	75%
Brown	SI	VVS	74%
Brown	SI	VS	73%
Brown	SI	SI	72%
Very Dark Yellow	SI	EX	71%
Very Dark Yellow	SI	VVS	70%
Very Dark Yellow	SI	VS	69%
Very Dark Yellow	SI	SI	68%
Black	SI	EX	67%
Black	SI	VVS	66%
Black	SI	VS	65%
Black	SI	SI	64%

Dep III	01.1%
Table	59%

Girdle

Quiet	Polished
Polish	EXCELLENT

Symmetry

Fluorescence	NONE
Excitation (nm)	488   576/592/620

100% completion (N)

**Comments:**  
This Laboratory Grown Diamond was

created by Chemical Vapor Deposition (CVD) growth process.

Type IIa