



ELECTRONIC COPY

LG762547532
Report verification at igi.org

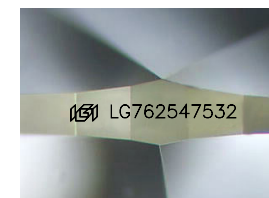


January 8, 2026
IGI Report Number **LG762547532**
Description **LABORATORY GROWN DIAMOND**

Shape and Cutting Style **HEART BRILLIANT**
Measurements **17.35 X 17.75 X 10.54 MM**

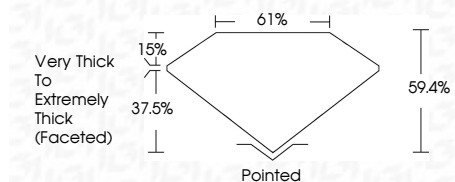
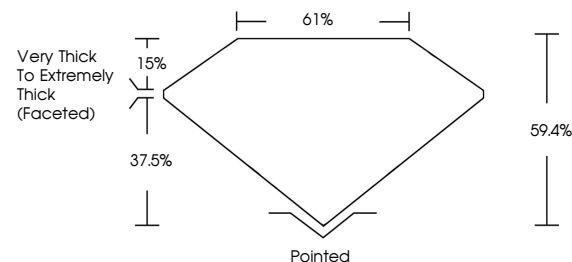
GRADING RESULTS

Carat Weight **20.25 CARATS**
Color Grade **E**
Clarity Grade **VS 1**

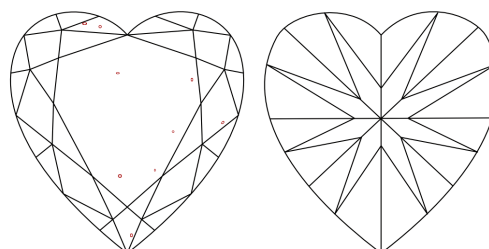


Sample Image Used

PROPORTIONS



CLARITY CHARACTERISTICS



KEY TO SYMBOLS

Red symbols indicate internal characteristics.
Green symbols indicate external characteristics.

COLOR

D E F G H I J Faint Very Light Light

CLARITY

FL	IF	VS ¹⁻²	VS ¹⁻²	SI ¹⁻²	I ¹⁻³
Flawless	Internally Flawless	Very Very Slightly Included	Very Slightly Included	Slightly Included	Included

ADDITIONAL GRADING INFORMATION

Polish **EXCELLENT**
Symmetry **EXCELLENT**
Fluorescence **NONE**
Inscription(s) **IGI LG762547532**
Comments: This Laboratory Grown Diamond was created by Chemical Vapor Deposition (CVD) growth process. Type IIa



IGI



January 8, 2026
IGI Report No LG762547532
HEART BRILLIANT
17.35 X 17.75 X 10.54 MM
20.25 CARATS
E
VS 1
59.4%
61%
Very Thick to Extremely Thick (Faceted)
Pointed
EXCELLENT
EXCELLENT
NONE
IGI LG762547532
Comments: This Laboratory Grown Diamond was created by Chemical Vapor Deposition (CVD) growth process. Type IIa