



ELECTRONIC COPY

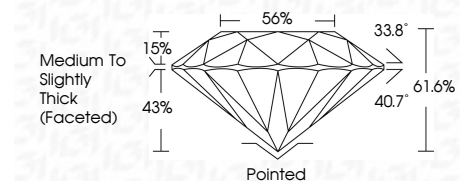
LG762546100
Report verification at igi.org



March 14, 2026
IGI Report Number LG762546100
Description LABORATORY GROWN DIAMOND
Shape and Cutting Style ROUND BRILLIANT
Measurements 8.85 - 8.89 X 5.46 MM

GRADING RESULTS

Carat Weight 2.63 CARATS
Color Grade D
Clarity Grade VVS 2
Cut Grade IDEAL

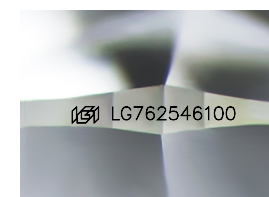


ADDITIONAL GRADING INFORMATION

Polish EXCELLENT
Symmetry EXCELLENT
Fluorescence NONE
Inscription(s) LG762546100
Comments: HEARTS & ARROWS
As Grown - No indication of post-growth treatment.
This Laboratory Grown Diamond was created by High Pressure High Temperature (HPHT) growth process.
Type II

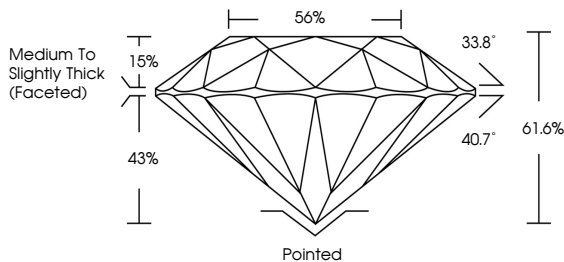


March 14, 2026
IGI Report No LG762546100
ROUND BRILLIANT
8.85 - 8.89 X 5.46 MM
2.63 CARATS
D
VVS 2
IDEAL
61.6%
56%
Medium To Slightly Thick (Faceted)
Pointed
EXCELLENT
EXCELLENT
NONE
IGI LG762546100
Comments: HEARTS & ARROWS
As Grown - No indication of post-growth treatment.
This Laboratory Grown Diamond was created by High Pressure High Temperature (HPHT) growth process.
Type II

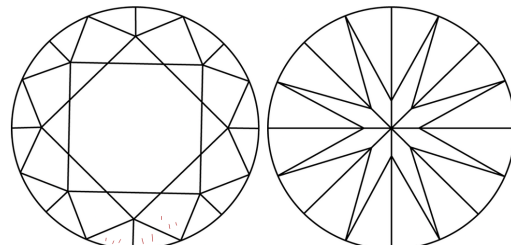


Sample Image Used

PROPORTIONS



CLARITY CHARACTERISTICS



KEY TO SYMBOLS

Red symbols indicate internal characteristics.
Green symbols indicate external characteristics.



COLOR

Table with color grades: D, E, F, G, H, I, J, Faint, Very Light, Light

CLARITY

Table with clarity grades: FL, IF, VVS 1-2, VS 1-2, SI 1-2, I 1-3, Flawless, Internally Flawless, Very Very Slightly Included, Very Slightly Included, Slightly Included, Included

