



ELECTRONIC COPY

LG762546003
Report verification at igi.org



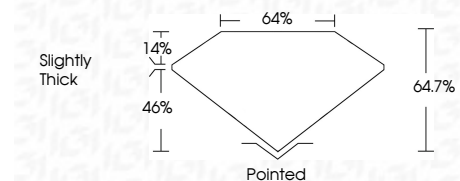
March 16, 2026
IGI Report Number LG762546003
Description LABORATORY GROWN DIAMOND

Shape and Cutting Style CUT CORNERED RECTANGULAR MODIFIED BRILLIANT

Measurements 8.90 X 6.43 X 4.16 MM

GRADING RESULTS

Carat Weight 2.02 CARATS
Color Grade D
Clarity Grade FLAWLESS



ADDITIONAL GRADING INFORMATION

Polish EXCELLENT
Symmetry EXCELLENT
Fluorescence NONE
Inscription(s) IGI LG762546003
Comments: As Grown - No indication of post-growth treatment.
This Laboratory Grown Diamond was created by High Pressure High Temperature (HPHT) growth process. Type II



March 16, 2026
IGI Report No LG762546003
CUT CORNERED RECT. MODIFIED BRILLIANT
8.90 X 6.43 X 4.16 MM
2.02 CARATS
D
FLAWLESS
64.7%
46%
Slightly Thick
Pointed
EXCELLENT
EXCELLENT
NONE
IGI LG762546003
Comments: As Grown - No indication of post-growth treatment. This Laboratory Grown Diamond was created by High Pressure High Temperature (HPHT) growth process. Type II

March 16, 2026
IGI Report Number LG762546003
Description LABORATORY GROWN DIAMOND
Shape and Cutting Style CUT CORNERED RECTANGULAR MODIFIED BRILLIANT
Measurements 8.90 X 6.43 X 4.16 MM

GRADING RESULTS

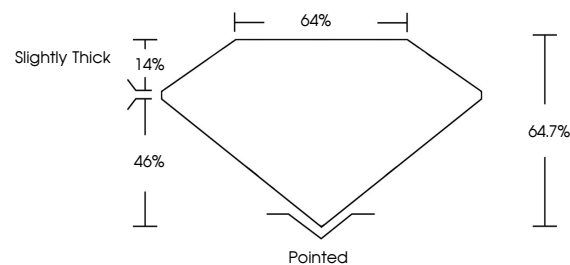
Carat Weight 2.02 CARATS
Color Grade D
Clarity Grade FLAWLESS

ADDITIONAL GRADING INFORMATION

Polish EXCELLENT
Symmetry EXCELLENT
Fluorescence NONE
Inscription(s) IGI LG762546003

Comments: As Grown - No indication of post-growth treatment.
This Laboratory Grown Diamond was created by High Pressure High Temperature (HPHT) growth process. Type II

PROPORTIONS

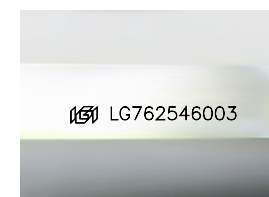


CLARITY CHARACTERISTICS



KEY TO SYMBOLS

Red symbols indicate internal characteristics.
Green symbols indicate external characteristics.



Sample Image Used

COLOR

D E F G H I J Faint Very Light Light

CLARITY

FL IF VS 1-2 VS 1-2 SI 1-2 I 1-3
Flawless Internally Flawless Very Very Slightly Included Very Slightly Included Slightly Included Included