



**ELECTRONIC COPY**

LG762544579  
Report verification at igi.org



February 19, 2026  
IGI Report Number **LG762544579**  
Description **LABORATORY GROWN DIAMOND**  
Shape and Cutting Style **ROUND BRILLIANT**  
Measurements **8.42 - 8.46 X 5.26 MM**  
**GRADING RESULTS**  
Carat Weight **2.29 CARATS**  
Color Grade **D**  
Clarity Grade **VVS 1**  
Cut Grade **IDEAL**

February 19, 2026  
IGI Report Number **LG762544579**  
Description **LABORATORY GROWN DIAMOND**  
Shape and Cutting Style **ROUND BRILLIANT**  
Measurements **8.42 - 8.46 X 5.26 MM**

**GRADING RESULTS**

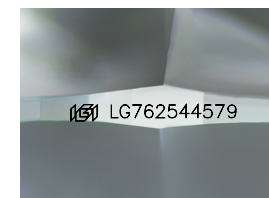
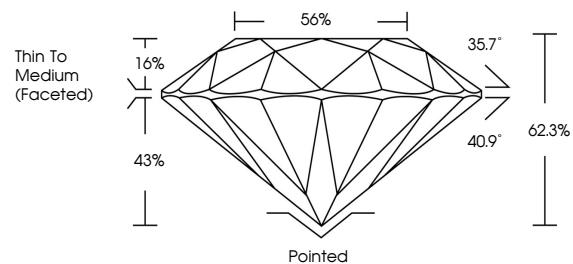
Carat Weight **2.29 CARATS**  
Color Grade **D**  
Clarity Grade **VVS 1**  
Cut Grade **IDEAL**

**ADDITIONAL GRADING INFORMATION**

Polish **EXCELLENT**  
Symmetry **EXCELLENT**  
Fluorescence **NONE**  
Inscription(s) **IGI LG762544579**

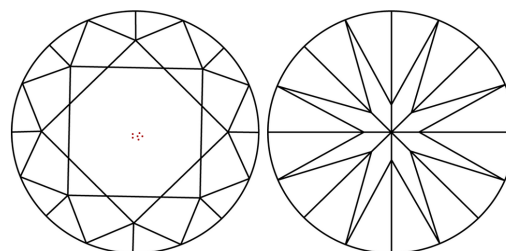
Comments: As Grown - No indication of post-growth treatment.  
This Laboratory Grown Diamond was created by High Pressure High Temperature (HPHT) growth process.  
Type II

**PROPORTIONS**



Sample Image Used

**CLARITY CHARACTERISTICS**



**KEY TO SYMBOLS**

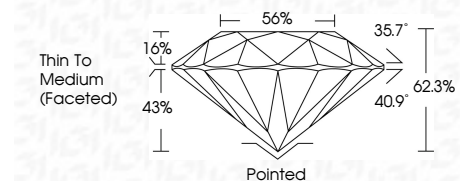
Red symbols indicate internal characteristics.  
Green symbols indicate external characteristics.

**COLOR**

D E F G H I J Faint Very Light Light

**CLARITY**

FL	IF	VVS <sup>1-2</sup>	VS <sup>1-2</sup>	SI <sup>1-2</sup>	I <sup>1-3</sup>
Flawless	Internally Flawless	Very Very Slightly Included	Very Slightly Included	Slightly Included	Included



**ADDITIONAL GRADING INFORMATION**

Polish **EXCELLENT**  
Symmetry **EXCELLENT**  
Fluorescence **NONE**  
Inscription(s) **IGI LG762544579**  
Comments: As Grown - No indication of post-growth treatment.  
This Laboratory Grown Diamond was created by High Pressure High Temperature (HPHT) growth process.  
Type II



February 19, 2026  
IGI Report No LG762544579  
**ROUND BRILLIANT**  
8.42 - 8.46 X 5.26 MM  
2.29 CARATS  
D  
VVS 1  
IDEAL  
62.3%  
56%  
Thin To Medium (Faceted)  
Pointed  
EXCELLENT  
EXCELLENT  
NONE  
IGI LG762544579  
Comments: As Grown - No indication of post-growth treatment.  
This Laboratory Grown Diamond was created by High Pressure High Temperature (HPHT) growth process.  
Type II