



**ELECTRONIC COPY**

LG762544339  
Report verification at igi.org



January 24, 2026

IGI Report Number **LG762544339**

Description **LABORATORY GROWN DIAMOND**

Shape and Cutting Style **ROUND BRILLIANT**

Measurements **9.17 - 9.26 X 5.75 MM**

**GRADING RESULTS**

Carat Weight **3.02 CARATS**

Color Grade **FANCY VIVID BLUE**

Clarity Grade **VS 2**

Cut Grade **IDEAL**

January 24, 2026  
IGI Report Number **LG762544339**  
Description **LABORATORY GROWN DIAMOND**  
Shape and Cutting Style **ROUND BRILLIANT**  
Measurements **9.17 - 9.26 X 5.75 MM**

**GRADING RESULTS**

Carat Weight **3.02 CARATS**

Color Grade **FANCY VIVID BLUE**

Clarity Grade **VS 2**

Cut Grade **IDEAL**

**ADDITIONAL GRADING INFORMATION**

Polish **EXCELLENT**

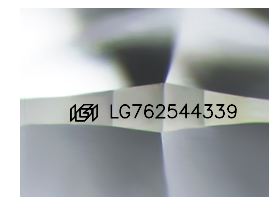
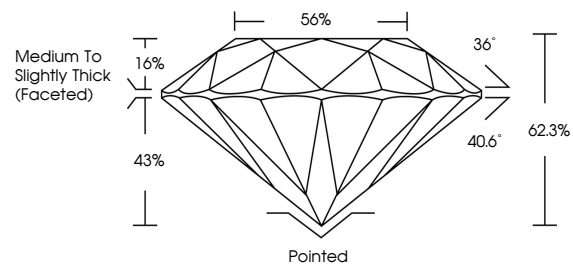
Symmetry **EXCELLENT**

Fluorescence **NONE**

Inscription(s) **IGI LG762544339**

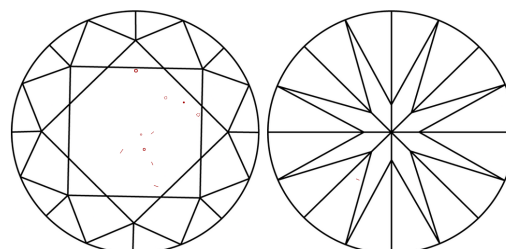
Comments: This Laboratory Grown Diamond was created by Chemical Vapor Deposition (CVD) growth process.  
Indications of post-growth treatment.

**PROPORTIONS**



Sample Image Used

**CLARITY CHARACTERISTICS**



**KEY TO SYMBOLS**

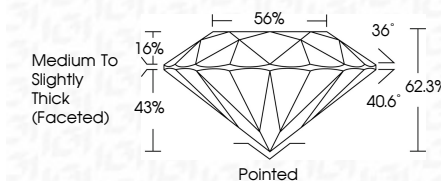
Red symbols indicate internal characteristics.  
Green symbols indicate external characteristics.

**COLOR**

D E F G H I J Faint Very Light Light

**CLARITY**

FL	IF	VS <sup>1-2</sup>	VS <sup>1-2</sup>	SI <sup>1-2</sup>	I <sup>1-3</sup>
Flawless	Internally Flawless	Very Very Slightly Included	Very Slightly Included	Slightly Included	Included



**ADDITIONAL GRADING INFORMATION**

Polish **EXCELLENT**

Symmetry **EXCELLENT**

Fluorescence **NONE**

Inscription(s) **IGI LG762544339**

Comments: This Laboratory Grown Diamond was created by Chemical Vapor Deposition (CVD) growth process.  
Indications of post-growth treatment.



**IGI**



January 24, 2026  
IGI Report No LG762544339  
ROUND BRILLIANT  
3.02 CARATS  
Carat Weight  
FANCY VIVID BLUE  
Color Grade  
VS 2  
Clarity Grade  
IDEAL  
Depth  
62.3%  
Table  
56%  
Girdle  
Medium To Slightly Thick (Faceted)  
Pointed  
EXCELLENT  
EXCELLENT  
NONE  
IGI LG762544339  
Comments: This Laboratory Grown Diamond was created by Chemical Vapor Deposition (CVD) growth process.  
Indications of post-growth treatment.