



**ELECTRONIC COPY**

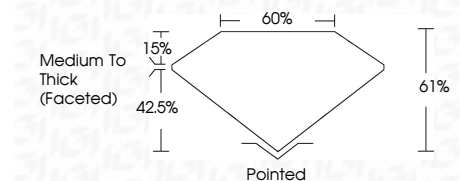
LG762543847  
Report verification at igi.org



January 21, 2026  
IGI Report Number **LG762543847**  
Description **LABORATORY GROWN DIAMOND**  
Shape and Cutting Style **CUSHION ANTIQUE BRILLIANT**  
Measurements **8.91 X 5.61 X 3.42 MM**

**GRADING RESULTS**

Carat Weight **1.59 CARAT**  
Color Grade **E**  
Clarity Grade **VVS 2**



**ADDITIONAL GRADING INFORMATION**

Polish **EXCELLENT**  
Symmetry **EXCELLENT**  
Fluorescence **NONE**  
Inscription(s) **(IGI) LG762543847**  
Comments: This Laboratory Grown Diamond was created by Chemical Vapor Deposition (CVD) growth process. Type IIa



January 21, 2026  
IGI Report No **LG762543847**  
**CUSHION ANTIQUE BRILLIANT**  
8.91 X 5.61 X 3.42 MM  
1.59 CARAT  
E  
VVS 2  
61%  
60%  
Medium To Thick (Faceted)  
Pointed  
EXCELLENT  
EXCELLENT  
NONE  
(IGI) LG762543847  
Comments: This Laboratory Grown Diamond was created by Chemical Vapor Deposition (CVD) growth process. Type IIa

**LABORATORY GROWN DIAMOND REPORT**

January 21, 2026  
IGI Report Number **LG762543847**  
Description **LABORATORY GROWN DIAMOND**  
Shape and Cutting Style **CUSHION ANTIQUE BRILLIANT**  
Measurements **8.91 X 5.61 X 3.42 MM**

**GRADING RESULTS**

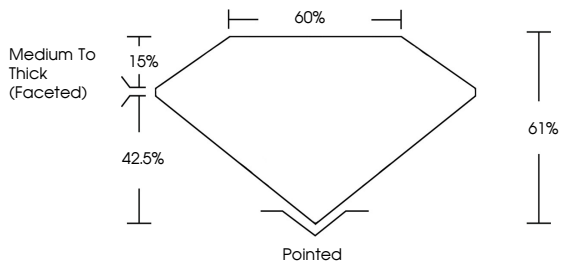
Carat Weight **1.59 CARAT**  
Color Grade **E**  
Clarity Grade **VVS 2**

**ADDITIONAL GRADING INFORMATION**

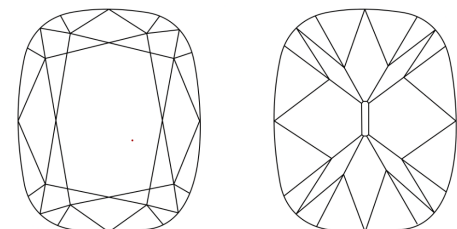
Polish **EXCELLENT**  
Symmetry **EXCELLENT**  
Fluorescence **NONE**  
Inscription(s) **(IGI) LG762543847**

Comments: This Laboratory Grown Diamond was created by Chemical Vapor Deposition (CVD) growth process. Type IIa

**PROPORTIONS**

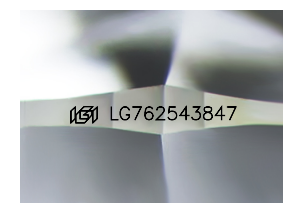


**CLARITY CHARACTERISTICS**



**KEY TO SYMBOLS**

Red symbols indicate internal characteristics.  
Green symbols indicate external characteristics.



Sample Image Used

**COLOR**

D E F G H I J Faint Very Light Light

**CLARITY**

FL	IF	VVS <sup>1-2</sup>	VS <sup>1-2</sup>	SI <sup>1-2</sup>	I <sup>1-3</sup>
Flawless	Internally Flawless	Very Very Slightly Included	Very Slightly Included	Slightly Included	Included

